

Type II Vipros 368 King with Fanuc 18P Control Layout Drawings



Amada America Inc.
7025 Firestone Blvd.
Buena Park CA. 90621
Phone: (714) 739 2111
Fax.: (714) 739 4099
Email info@amada.com

Warning

- Qualified personnel must complete all work.
- Do not apply power to the Type II Vipros 368 King until an A.E.S.I. (Amada Engineering and Service Incorporated) Engineer is present and has instructed you to do so.
- Not all information required to install the Type II Vipros 368 King is included with this document. Specific details for proper installation are found in the document *Type II Vipros 368 King with Fanuc 18P User Pre-installation Guide* available at the Amada America Internet web site at <http://www.amada.com>.
- Considerable effort has been made to ensure that this manual is free of inaccuracies and omissions. However, as we are constantly improving our product, some of the data contained herein may be out of date. Please check our Internet site, <http://www.amada.com>, for the latest release of this document.

Contents

Planning the Location of the Type II Vipros 368 King 4

 Plan View - Type II Vipros 368 King 5

 Plan View - Type II Vipros 368 King (shown with optional standard conveyors)..... 6

 Plan View - Type II Vipros 368 King (shown with optional standard conveyors and MP1530 loader)..... 7

 End View - Type II Vipros 368 King..... 8

 Elevation View - Type II Vipros 368 King 9

 Chiller Placement..... 10

Planning the Location of the Type II Vipros 368 King

The following diagrams provide the details for positioning the Type II Vipros 368 King.

- No obstacles are allowed in the worksheet travel area and the ceiling must be at least 40" above the Type II Vipros 368 King.
- All of the recommended maintenance areas should be used, but at a minimum the doors of the NC unit must be able to be opened. Any reduction of the listed maintenance areas may increase time and expense of installation and maintenance.
- The Type II Vipros 368 King machine and control must be protected from direct sunlight or other heat sources. Direct exposure to direct heating sources such as infrared heaters have been shown to affect punch and die alignment.
- The positioning of the SBC EX5.5 Chiller is very flexible.

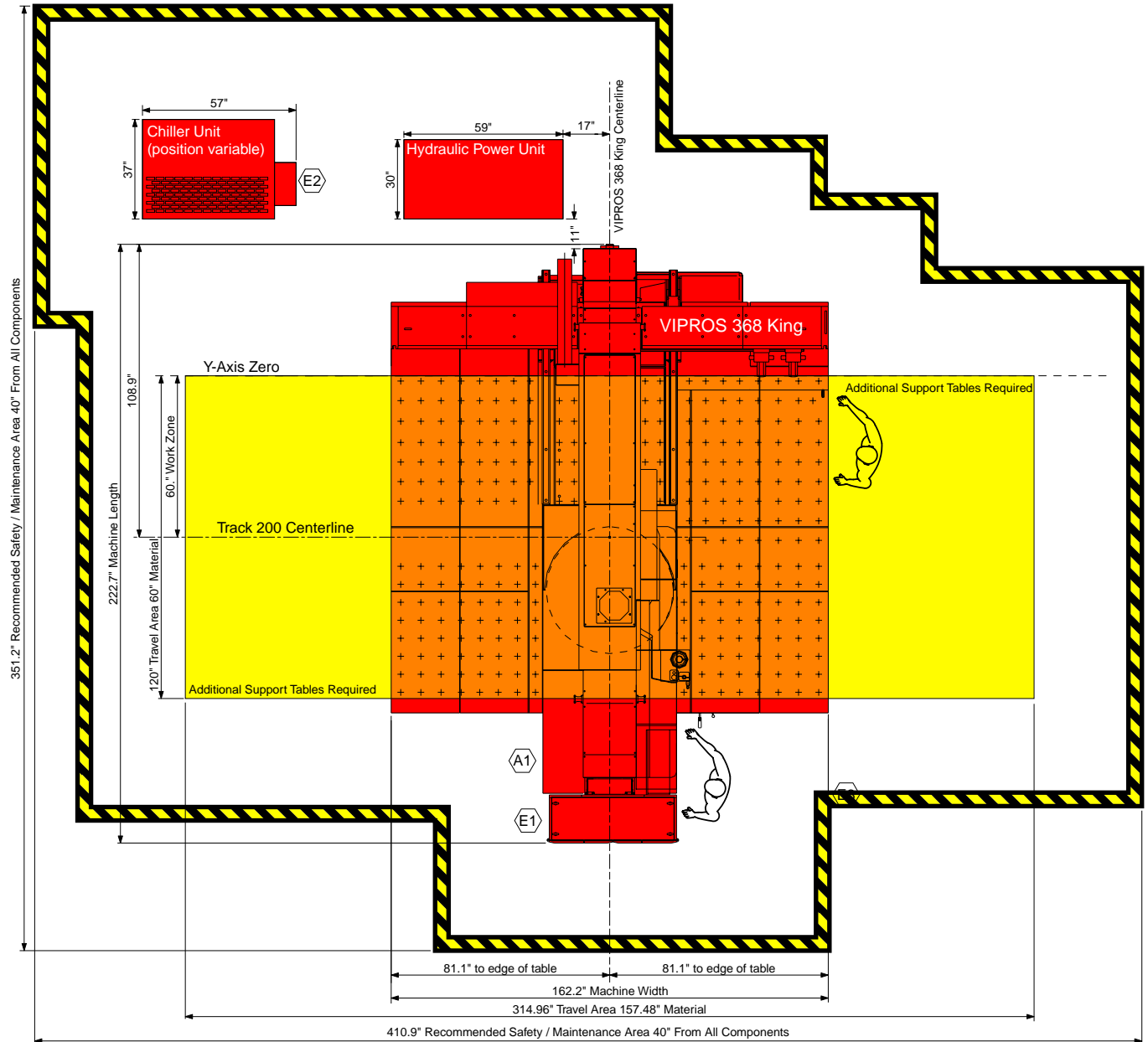
Plan View - Type II Vipros 368 King

Electrical Requirements	
E1	Vipros 368 King Type II 230 / 460 / 3 / 60 ±10% 28 kVA 70 amps @ 230 / 3 / 60 VAC 35 amps @ 460 / 3 / 60 VAC
E2	SBC EX5.5 Chiller 230 or 460 / 3 / 60 ±10% 15 kVA 37 amps @ 230 / 3 / 60 VAC 19 amps @ 460 / 3 / 60 VAC


Compressed Air Requirements	
A1	Vipros 368 King Type II 80 psi @ 8.8 ft ³ /min.



12"	12"	12"
scale		



Plan View - Type II Vipros 368 King (shown with optional standard conveyors)

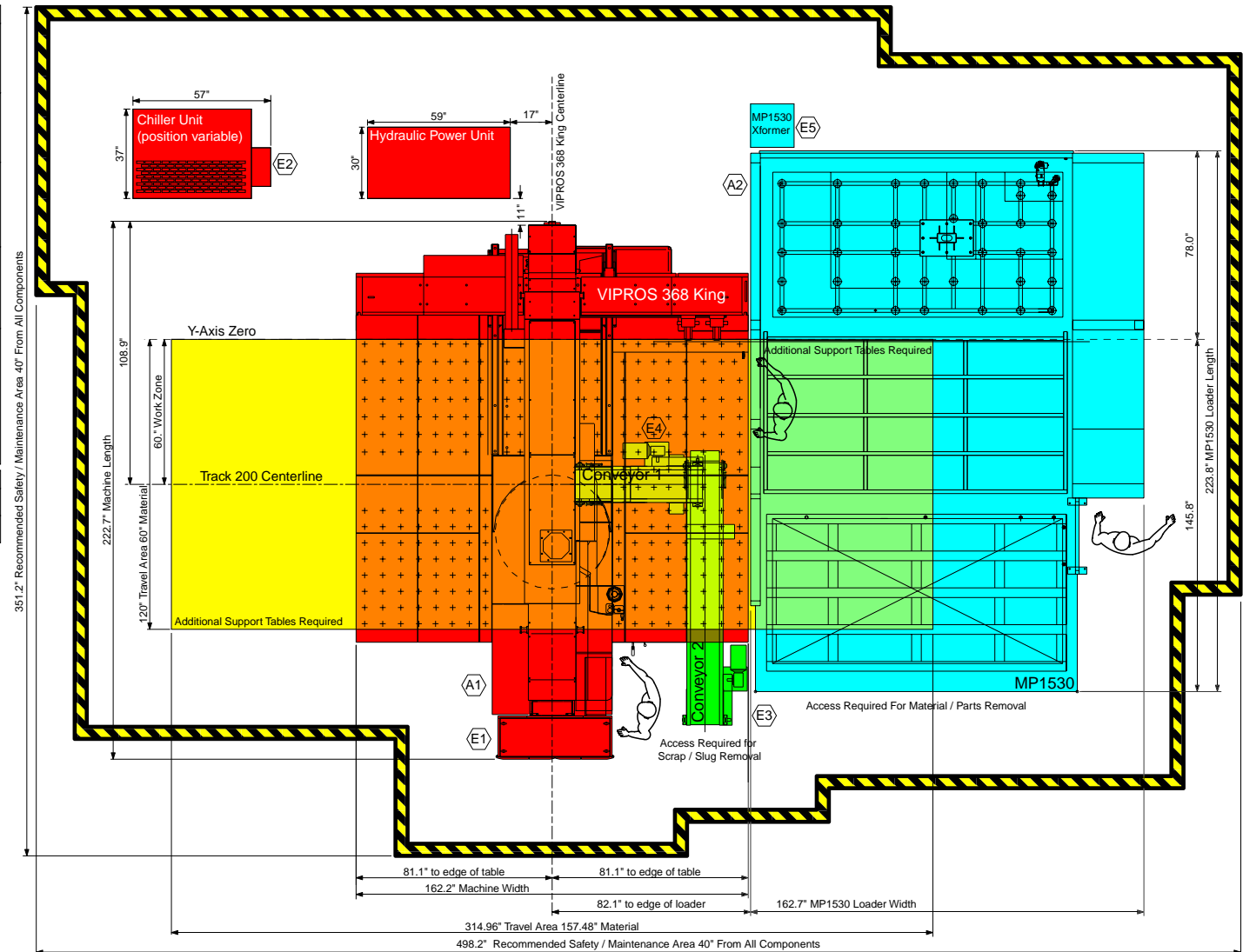
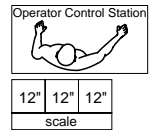
Electrical Requirements		
E1	Vipros 368 King Type II 230 / 460 / 3 / 60 ±10% 28 kVA 70 amps @ 230 / 3 / 60 VAC 35 amps @ 460 / 3 / 60 VAC	
E2	SBC EX5.5 Chiller 230 or 460 / 3 / 60 ±10% 15 kVA 37 amps @ 230 / 3 / 60 VAC 19 amps @ 460 / 3 / 60 VAC	
E3	V368 Standard Conveyor 1 208 - 230 / 460 / 3 / 60 ±10% .8 kVA 2.1 amps @ 208 / 3 / 60 VAC 2.0 amps @ 230 / 3 / 60 VAC 1.0 amps @ 460 / 3 / 60 VAC	
E4	V368 Standard Conveyor 2 208 - 230 / 460 / 3 / 60 ±10% .8 kVA 2.1 amps @ 208 / 3 / 60 VAC 2.0 amps @ 230 / 3 / 60 VAC	
Compressed Air Requirements		
A1	Vipros 368 King Type II 80 psi @ 8.8 ft ³ /min.	
Operator Control Station		
		
12"	12"	12"
scale		



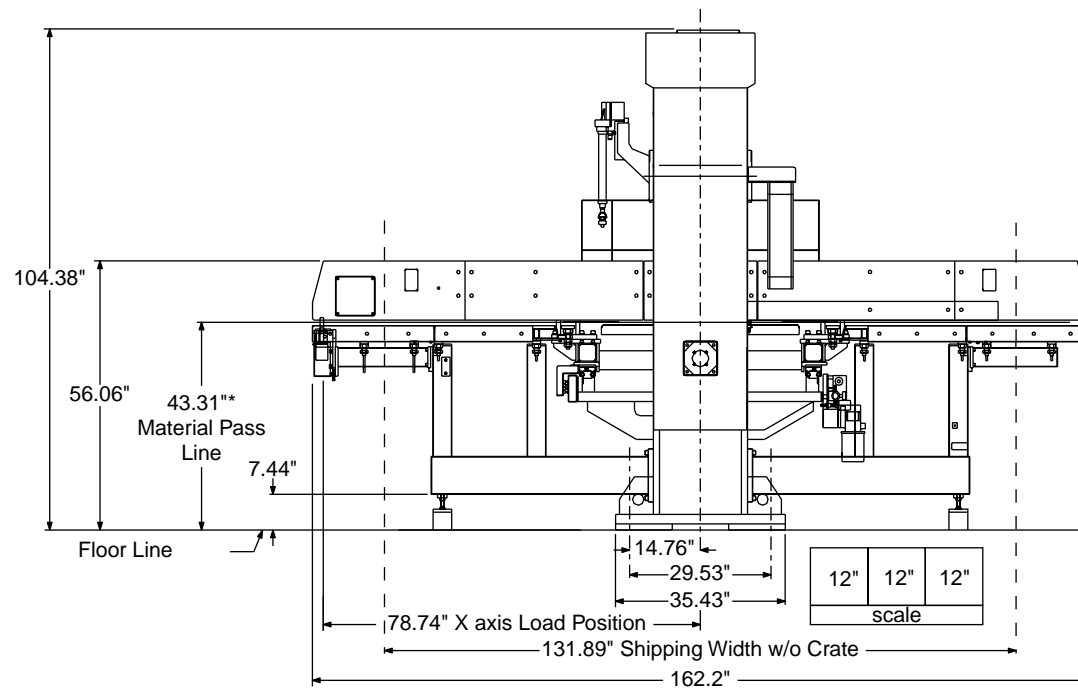
Plan View - Type II Vipros 368 King (shown with optional standard conveyors and MP1530 loader)

Electrical Requirements	
(E1)	Vipros 368 King Type II 230 / 460 / 3 / 60 ±10% 28 kVA 70 amps @ 230 / 3 / 60 VAC 35 amps @ 460 / 3 / 60 VAC
(E2)	SBC EX5.5 Chiller 230 or 460 / 3 / 60 ±10% 15 kVA 37 amps @ 230 / 3 / 60 VAC 19 amps @ 460 / 3 / 60 VAC
(E3)	V368 Standard Conveyor 1 208 - 230 / 460 / 3 / 60 ±10% .8 kVA 2.1 amps @ 208 / 3 / 60 VAC 2.0 amps @ 230 / 3 / 60 VAC 1.0 amps @ 460 / 3 / 60 VAC
(E4)	V368 Standard Conveyor 2 208 - 230 / 460 / 3 / 60 ±10% .8 kVA 2.1 amps @ 208 / 3 / 60 VAC 2.0 amps @ 230 / 3 / 60 VAC 1.0 amps @ 460 / 3 / 60 VAC
(E5)	MP1530 Loader 200 / 3 / 60 ±10%, 10 Kva To operate at 230 / 460 VAC a step up transformer is required with the following service is required 29 amps @ 200 / 3 / 60 VAC 26 amps @ 230 / 3 / 60 VAC 13 amps @ 460 / 3 / 60 VAC

Compressed Air Requirements	
(A1)	Vipros 368 King Type II 80 psi @ 8.8 ft ³ /min.
(A2)	MP1530 Loader 75 psi @ 31.8 ft ³ /min.

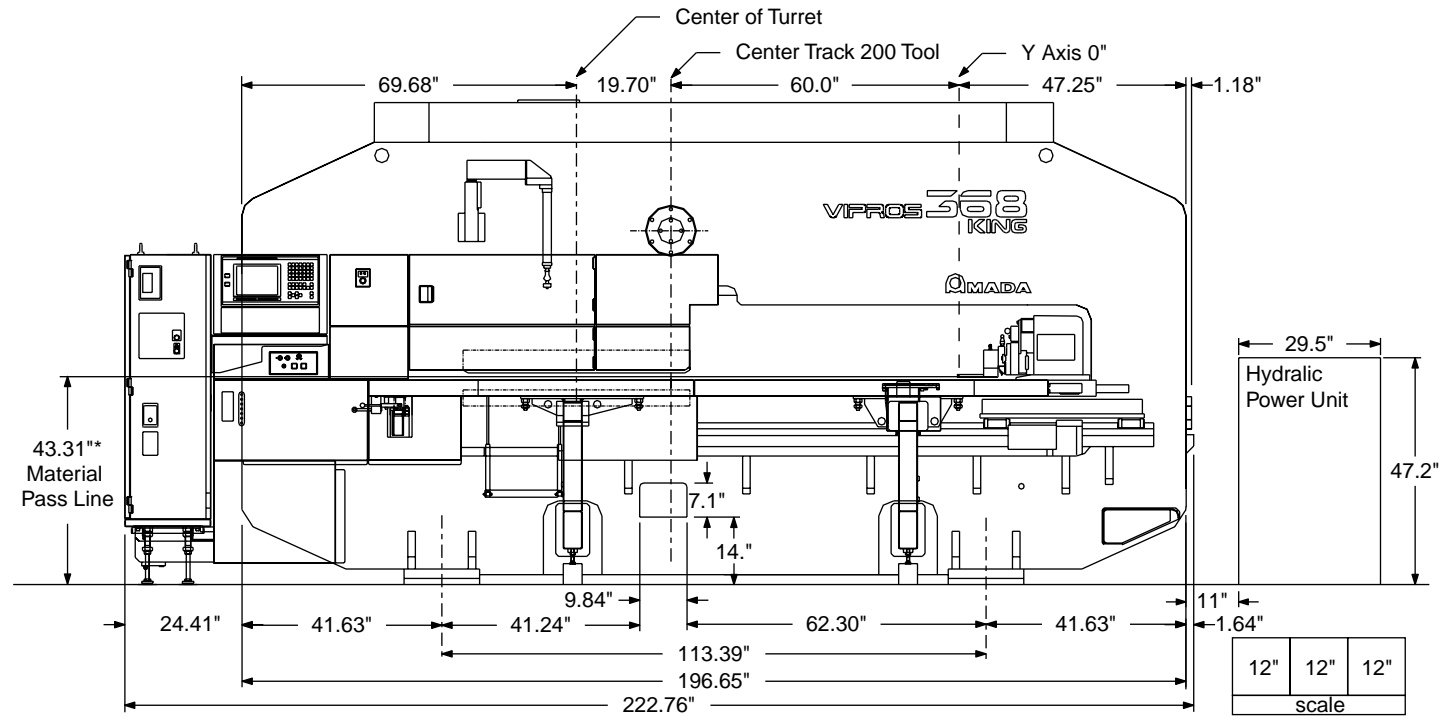


End View - Type II Vipros 368 King



*Material Pass Line will vary with installed optional equipment

Elevation View - Type II Vipros 368 King



*Material Pass Line will vary with installed options

Chiller Placement

