

# Vipros 368 King Layout Drawings



# Contents

Contents.....2

Planning the Location of the Vipros 368 King.....3

Lifting the Machine.....4

Machine Dimensions Plan View .....5

Machine Dimensions - Elevation View .....6

Machine Dimensions - End View .....7

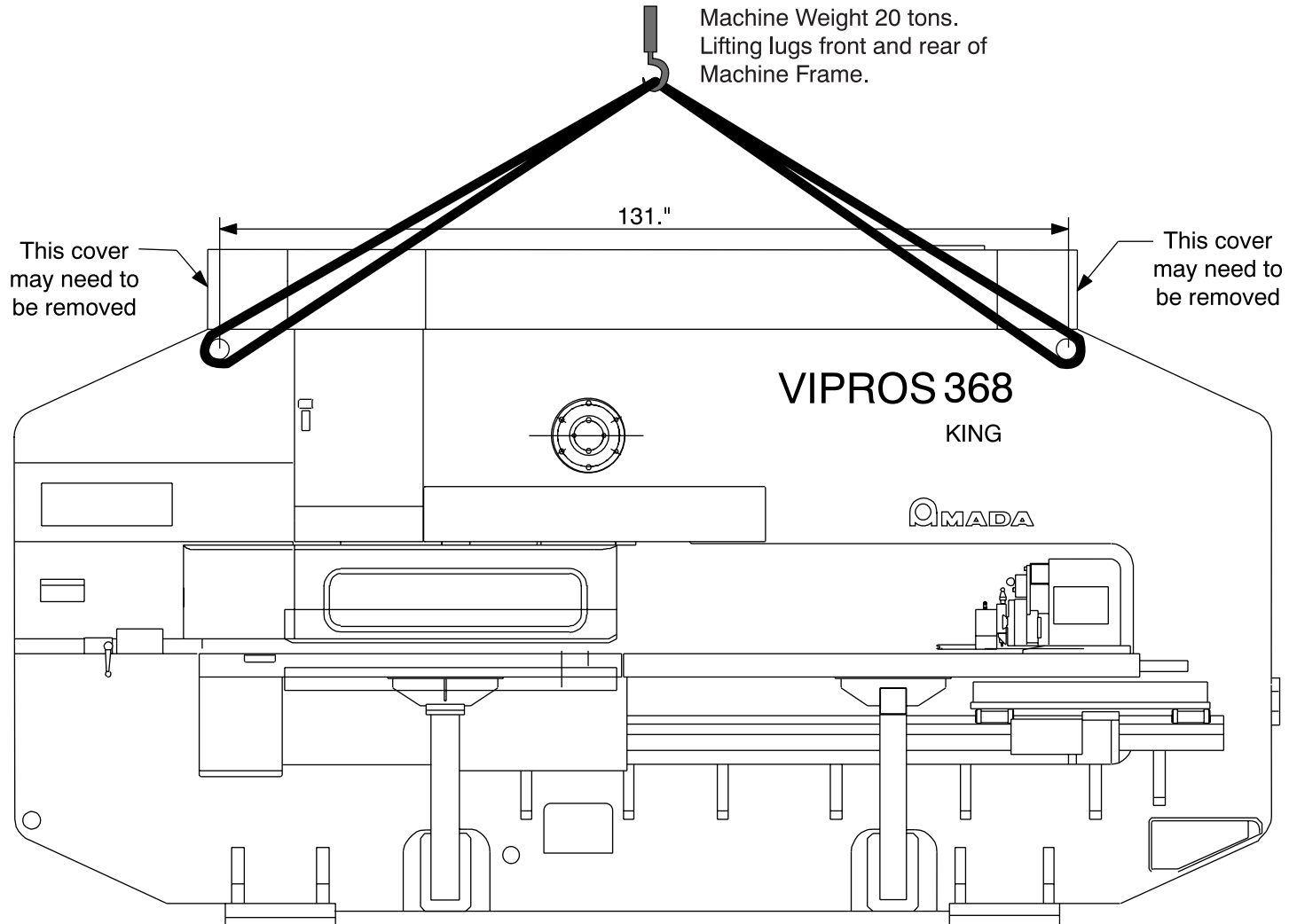
Maintenance Areas .....8

## Planning the Location of the Vipros 368 King

The following diagrams provide the details for positioning the Vipros 368 King.

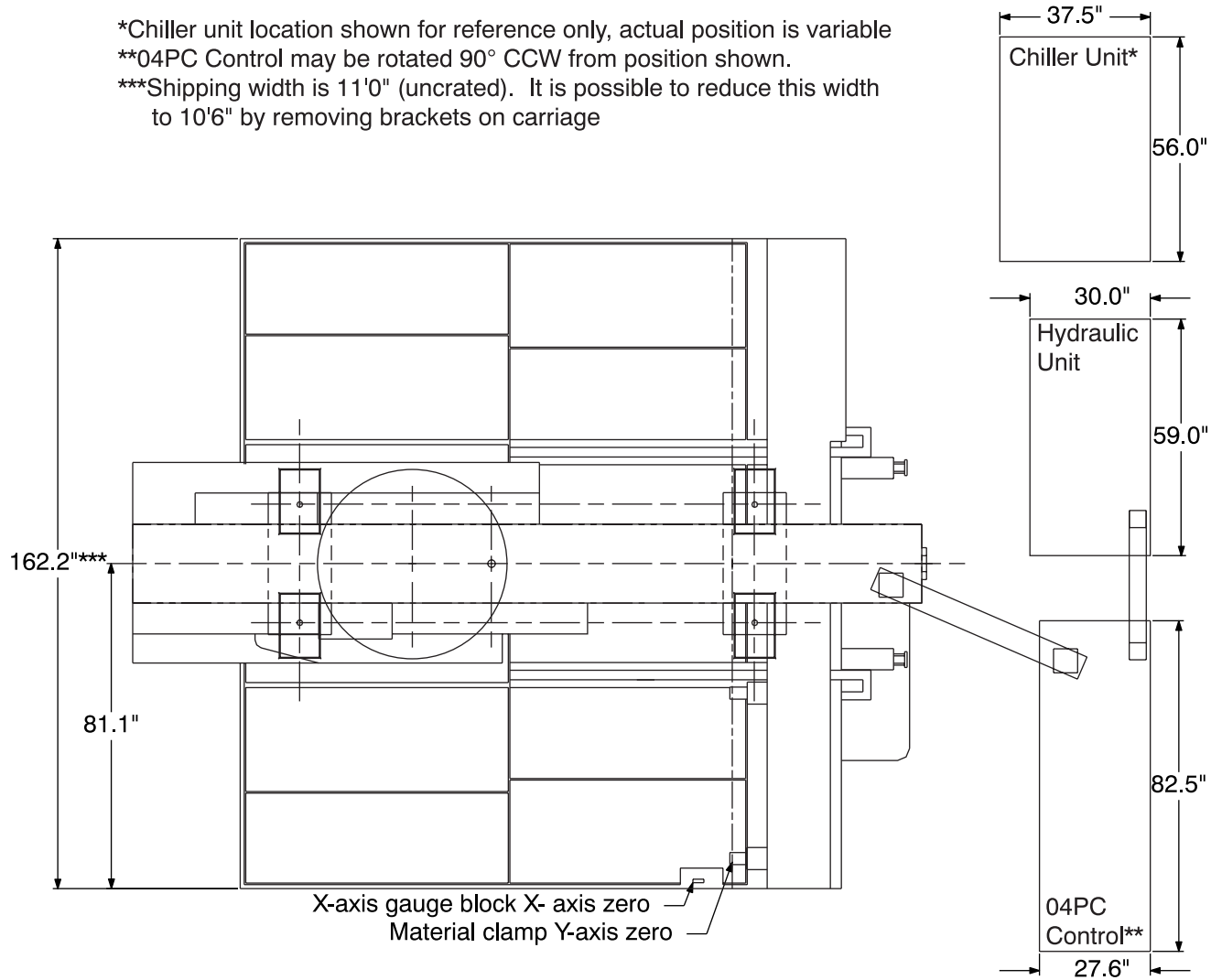
- No obstacles are allowed in the worksheet travel area and the ceiling must be at least 40" above the top of the Vipros 368 King.
- All of the maintenance areas recommended should be used, but at a minimum you must ensure that the doors of the Fanuc O4PC CNC unit can be opened.
- The Vipros 368 King, Fanuc O4PC control, and SBC-5.5 chiller must be protected from direct sunlight or other heat sources.
- The floor must be of sufficient quality to adequately support the weight of the machine. See *Floor Mounting Procedure* for details.

# Lifting the Machine

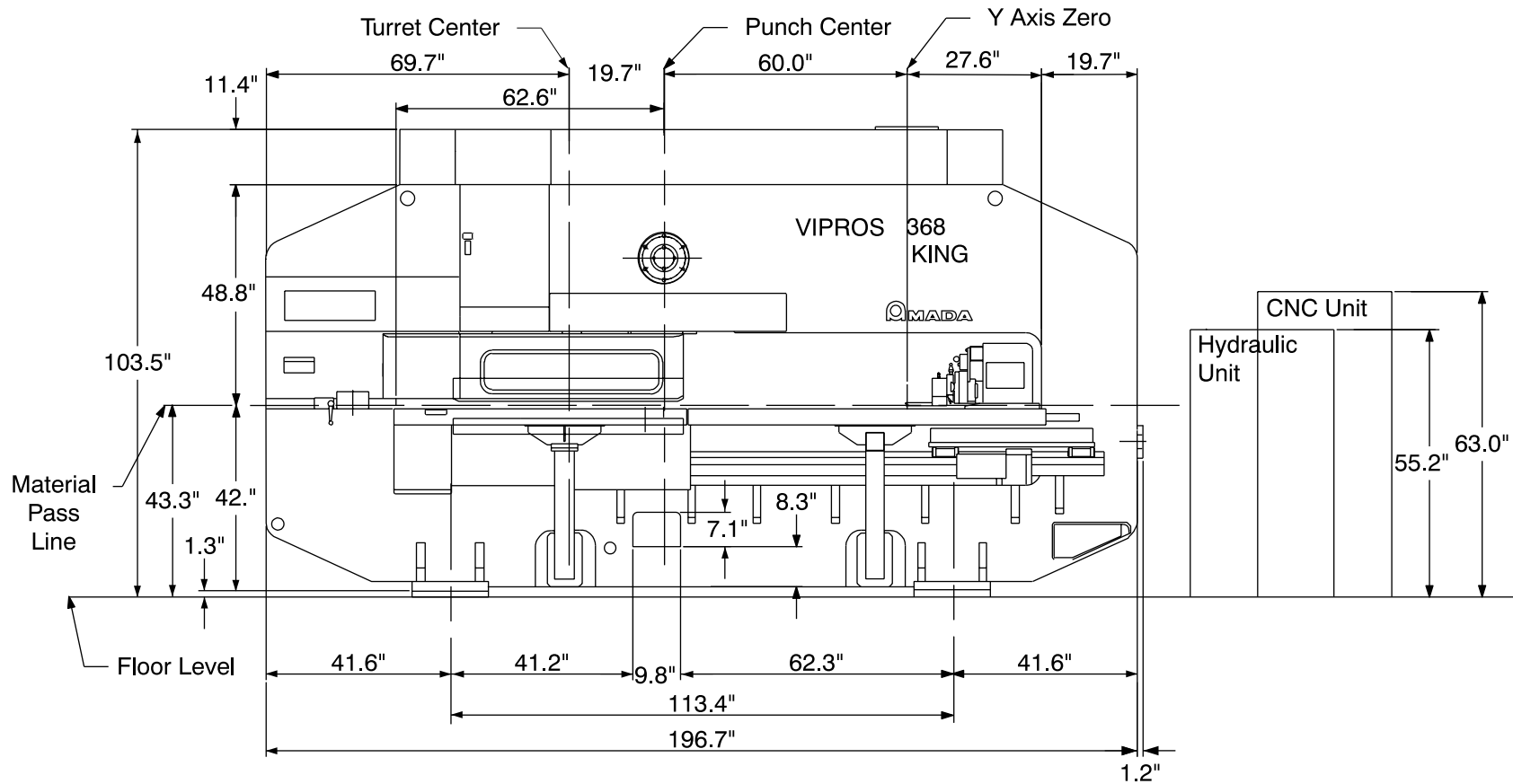


# Machine Dimensions Plan View

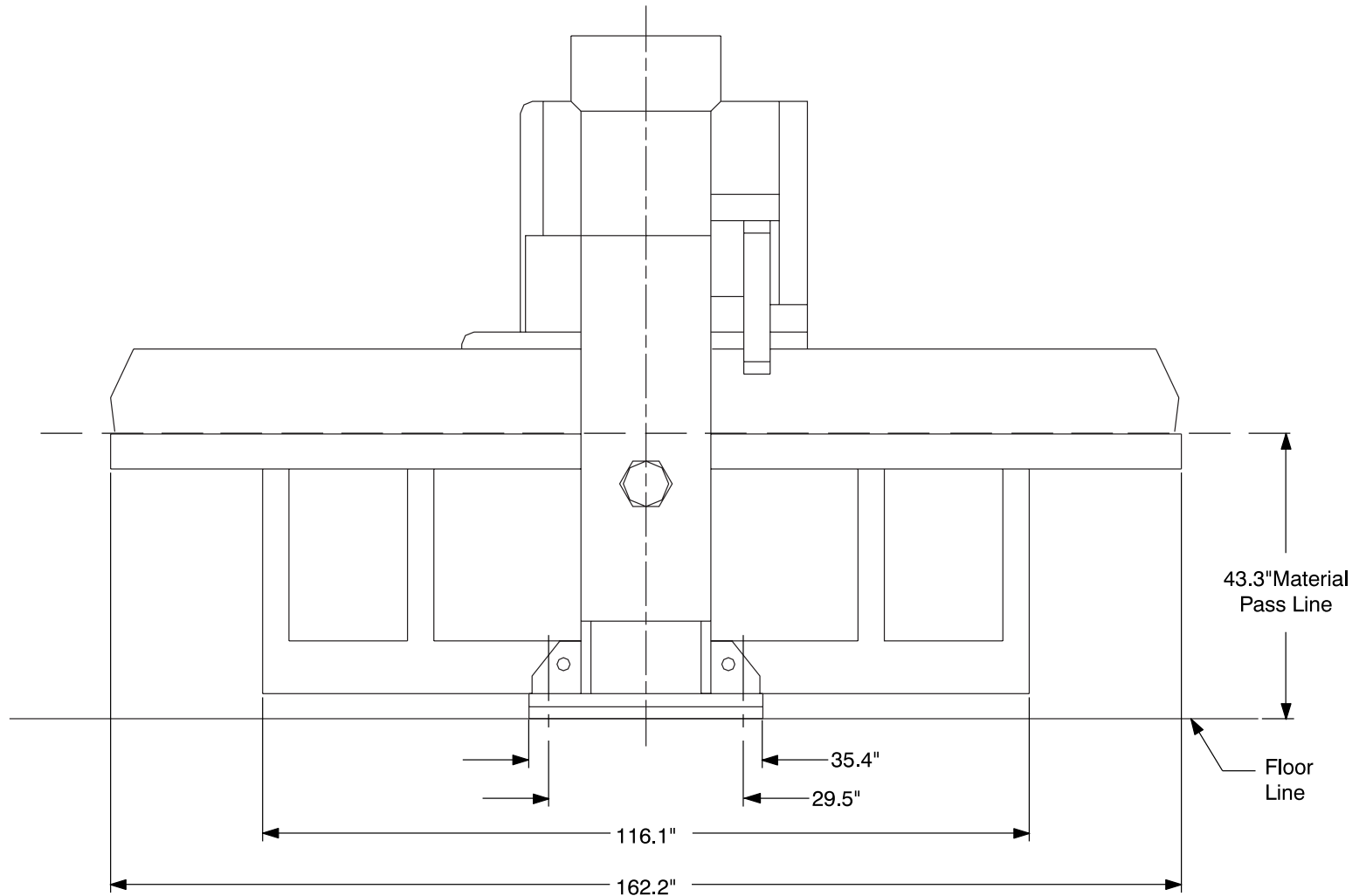
- \*Chiller unit location shown for reference only, actual position is variable
- \*\*04PC Control may be rotated 90° CCW from position shown.
- \*\*\*Shipping width is 11'0" (uncrated). It is possible to reduce this width to 10'6" by removing brackets on carriage



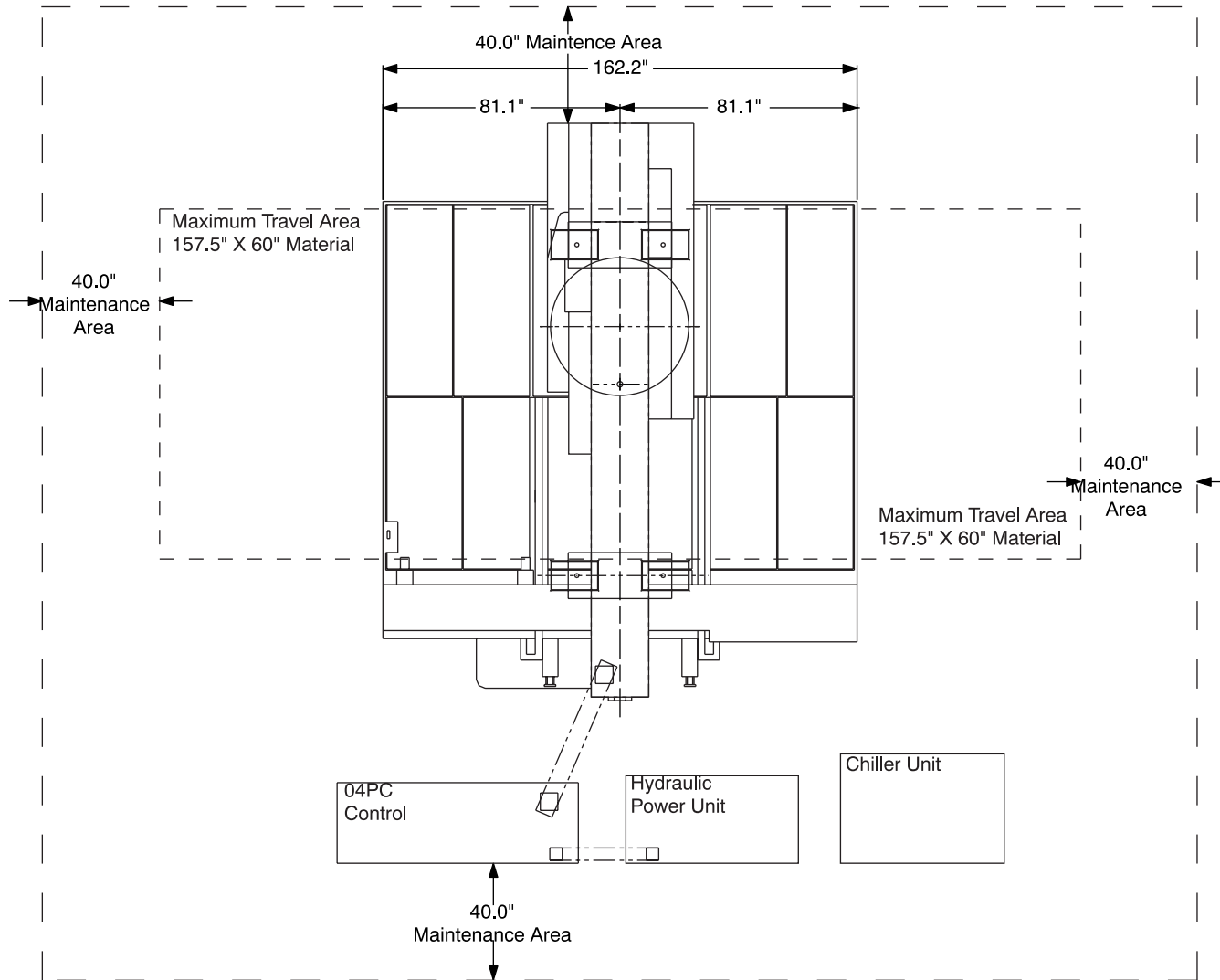
# Machine Dimensions - Elevation View



# Machine Dimensions - End View



# Maintenance Areas





Amada America Inc.  
7025 Firestone Blvd.  
Buena Park CA. 90621  
Phone: (714) 739 2111  
Fax: (714) 739 4099  
e-mail: info@amada.com