

Pega 255 with F18P Control Layout Drawings



Amada America Inc.
7025 Firestone Blvd.
Buena Park CA. 90621
Phone: (714) 739 2111
Fax: (714) 739 4099
Email info@amada.com

Warning

- Qualified personnel must complete all work.
- Do not apply power to the Pega 255 until an Amada Service Engineer is present and has instructed you to do so.
- Not all information required for proper installation of the Pega 255 is included with this document. Specific details for proper installation are found in the *document Pega 255 with F18P User Pre-installation Guide* available at the Amada America Internet web site at <http://www.amada.com>.
- Considerable effort has been made to ensure that this manual is free of inaccuracies and omissions. However, as we are constantly improving our product, some of the data contained herein may be out of date. Please check our Internet site, <http://www.amada.com>, for the latest release of this document.

Table Of Contents

Planning the Location of the Machine	4
Plan View - Pega 255.....	5
End View - Pega 255	6
Elevation View - Pega 255	7

Planning the Location of the Machine

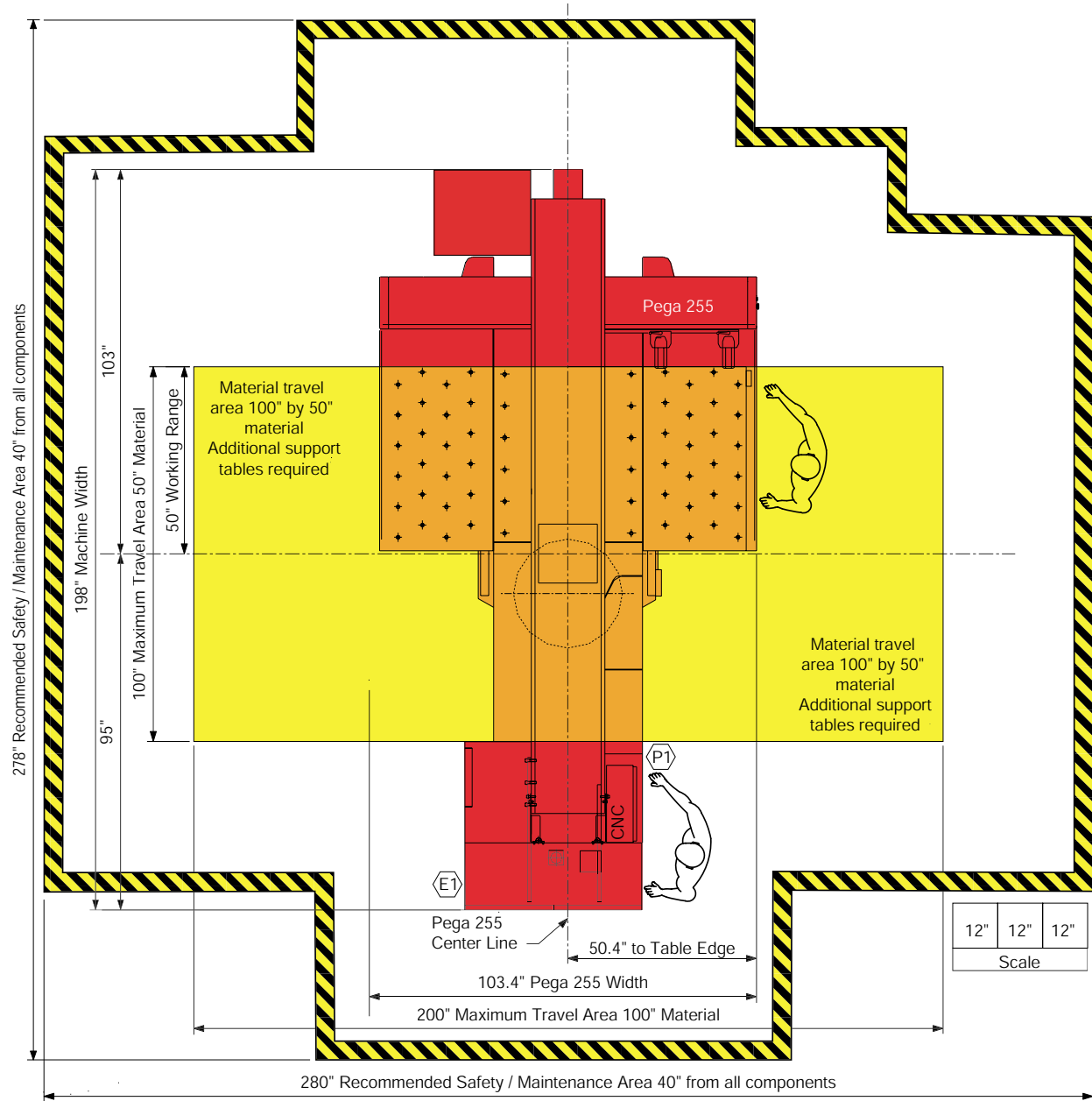
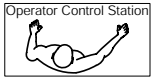
The following diagrams provide the details for positioning your new machine.

- Not all information required for proper installation of the Pega 255 is included with this document. Specific details for proper installation are found in the *document Pega 255 with F18P User Pre-installation Guide* available at the Amada America Internet web site at <http://www.amada.com>.
- No obstacles are allowed in the worksheet travel area and the ceiling must be at least 40" above the Pega 255.
- All of the Recommended Safety / Maintenance areas should be used, but you must at least ensure that the doors of the F18P control unit can be opened. Any reduction of the Recommended Safety / Maintenance areas may increase the possibility of personnel injury and increase the time and cost of installation or maintenance.
- The Pega 255 and F18P control must be protected from direct sunlight or other heat sources. Exposure to direct heating sources such as infrared heaters have been shown to affect punch and die alignment.

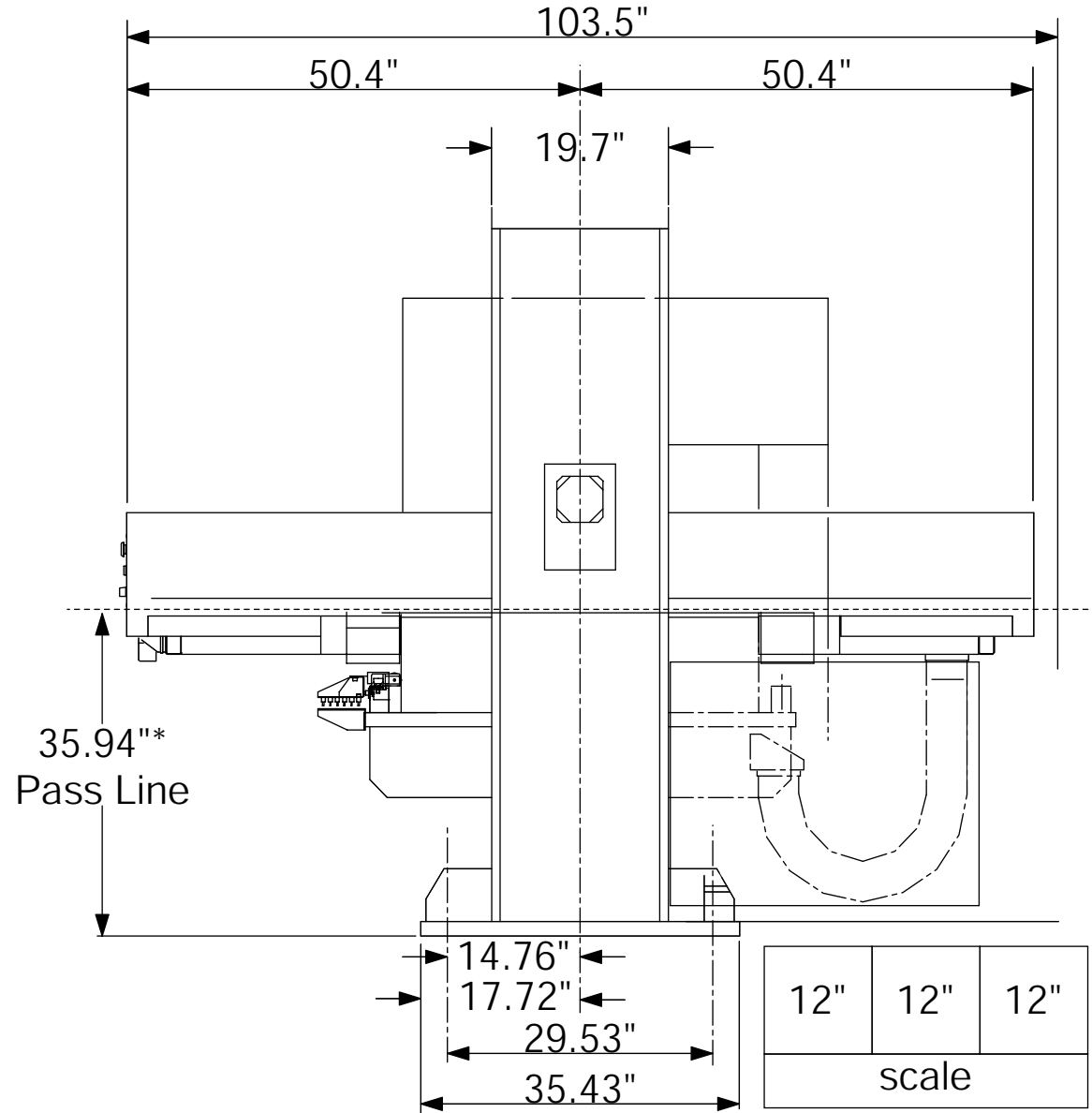
Plan View - Pega 255

Electrical Requirements:	
(E)	Pega 255 230 / 460 / 3 / 60 ±10%, 17 kVA 60 amps @ 230 / 3 / 60 VAC 30 amps @ 460 / 3 / 60 VAC

Compressed Air Requirements:	
(P)	Pega 255 80 psi @ 2.9 ft ³ /min.

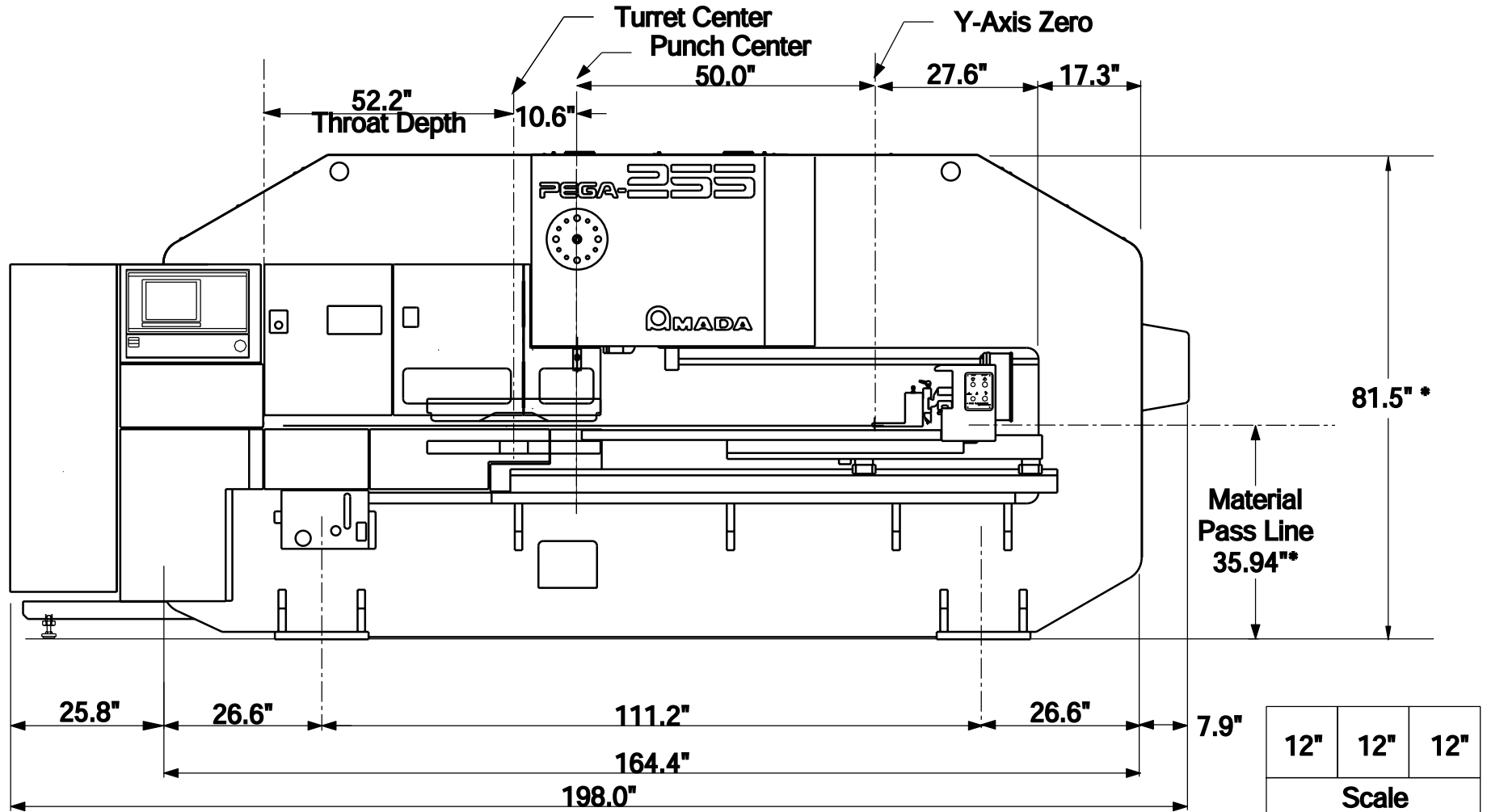


End View - Pega 255



*dimension subject to change with installed optional equipment

Elevation View - Pega 255



*Material Pass Line will vary depending on installed options