

# APPENDIX

## HFB LT / HFB MT

### HFB 700 BACKGAUGE

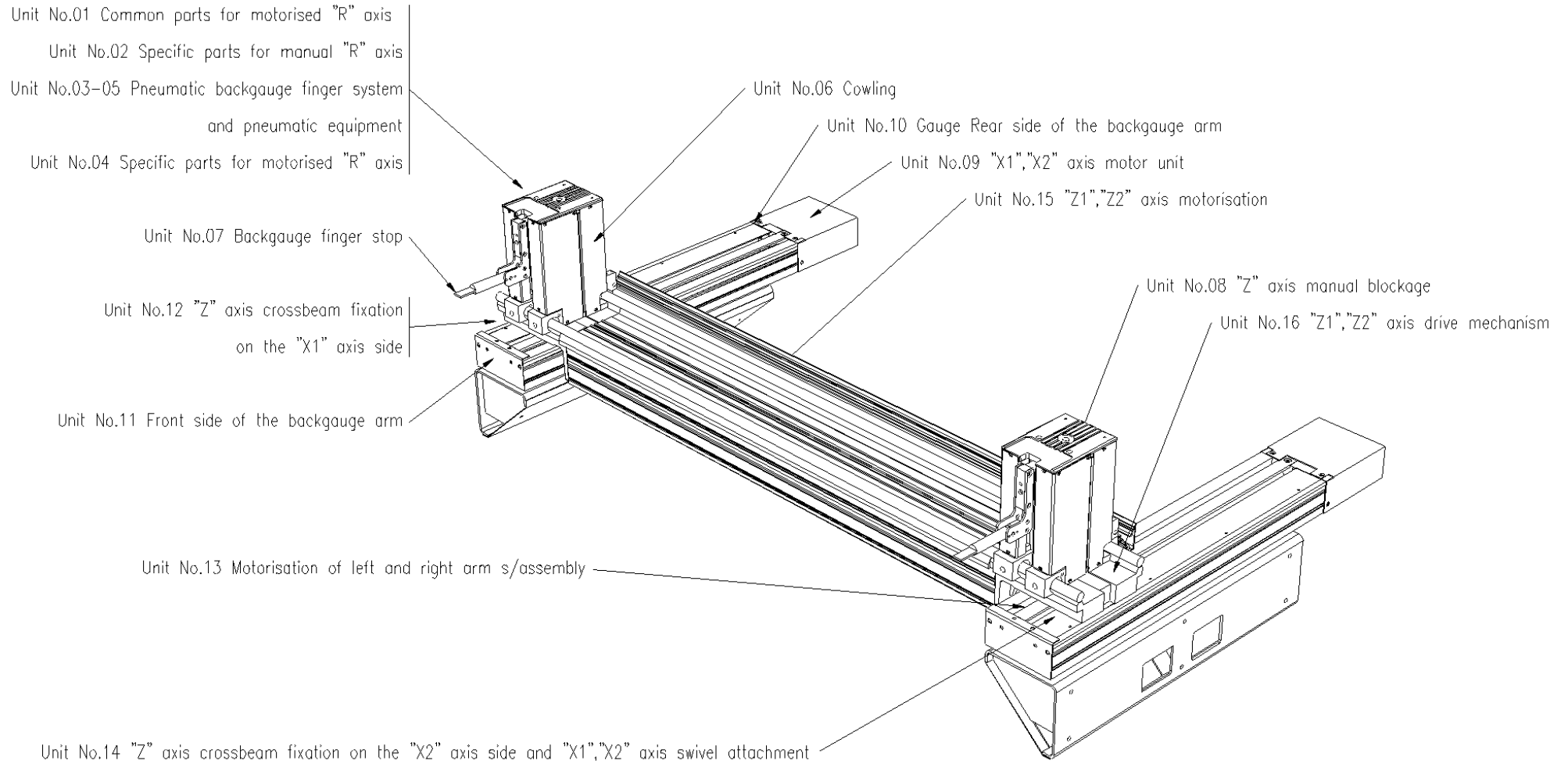


# PARTS LIST

**X 40865**

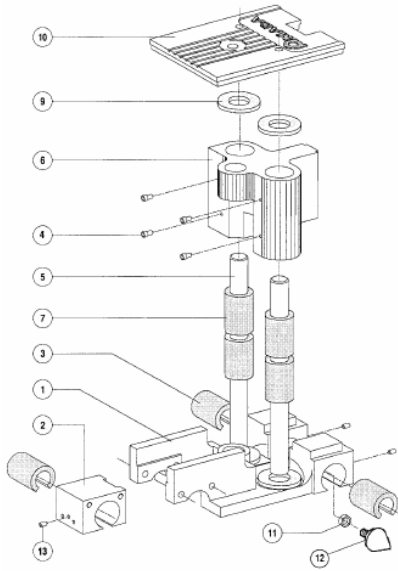
**Issue : 10/99**

HF700 – BACKGAUGE COMPONENT



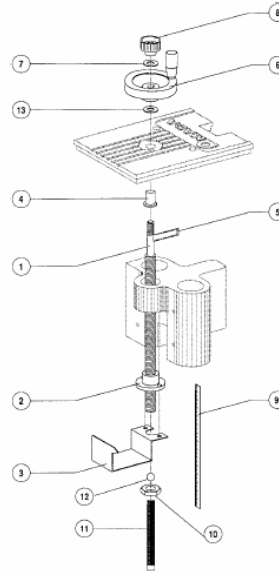
Unit No. 1

Common parts for motorised « R » axis



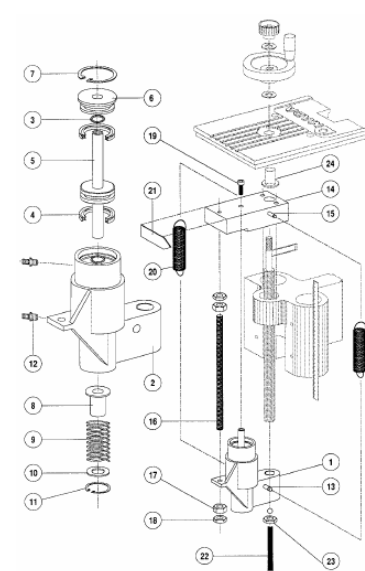
Unit No. 2

Specific parts for manual « R » axis



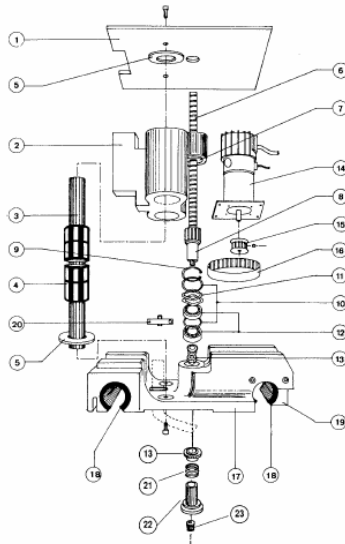
Unit No. 3

Pneumatic backgauge finger system and pneumatic equipment



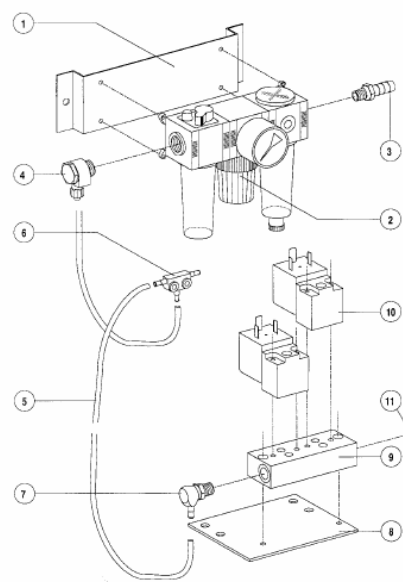
Unit No. 4

Specific parts for motorised « R » axis



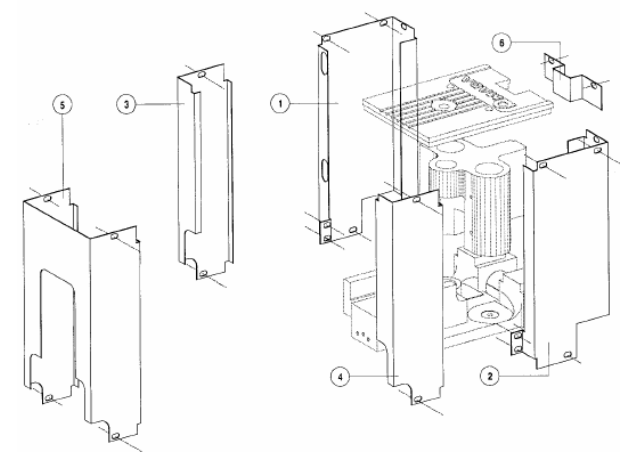
Unit No. 5

Pneumatic backgauge finger system and pneumatic equipment

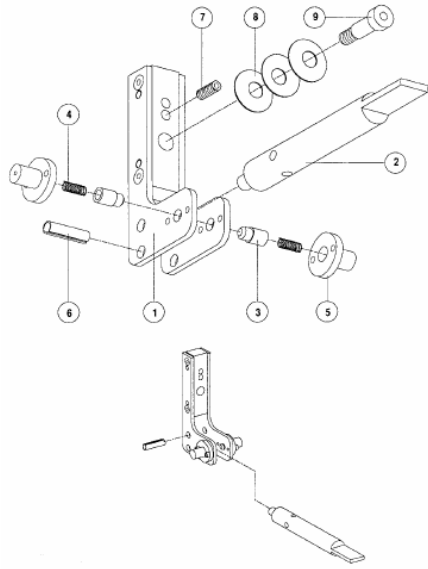


Unit No. 6

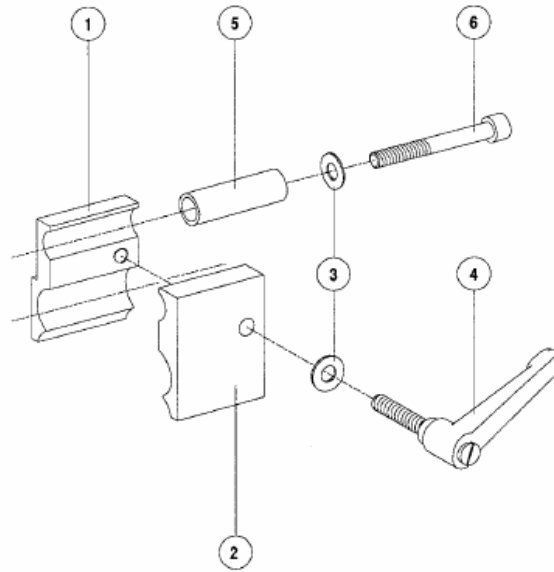
Cowling



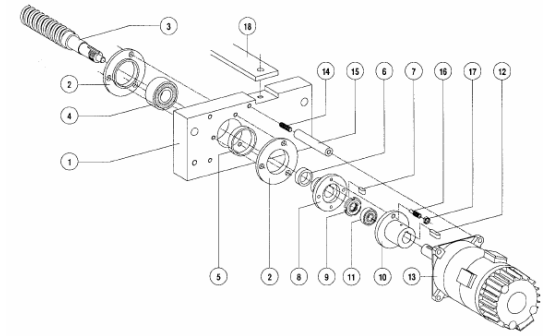
Unit No. 7  
Backgauge finger stop



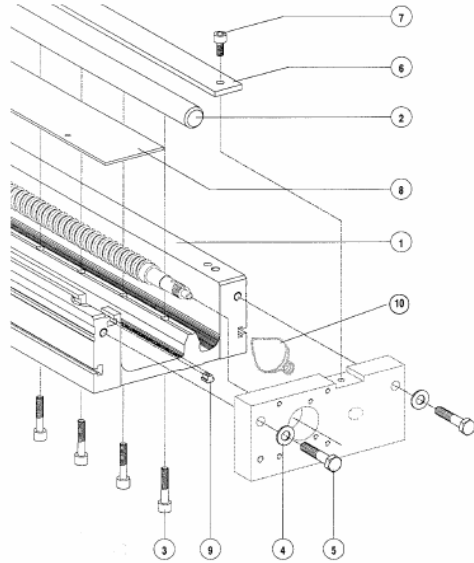
Unit No. 8  
« Z » axis manual blockage



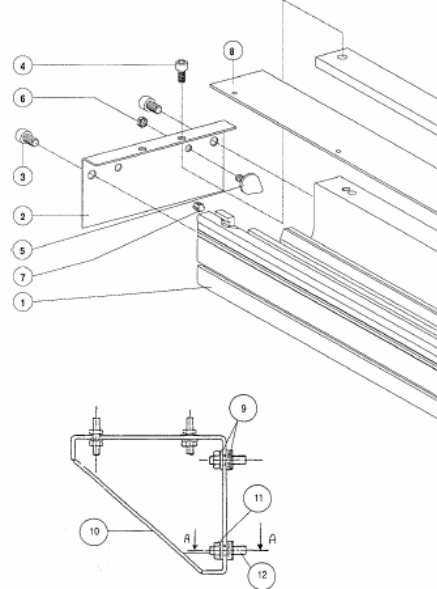
Unit No. 9  
« X1 », « X2 » axis motor unit



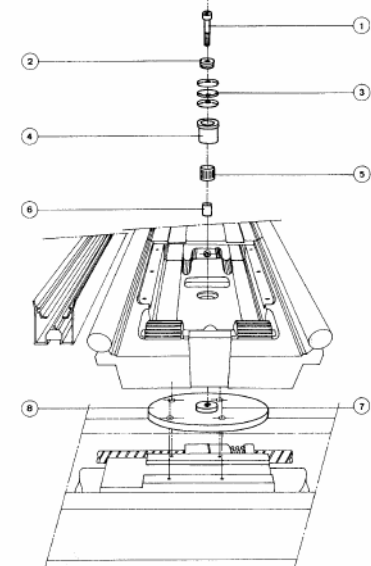
Unit No. 10  
Gauge rear side of the backgauge arm



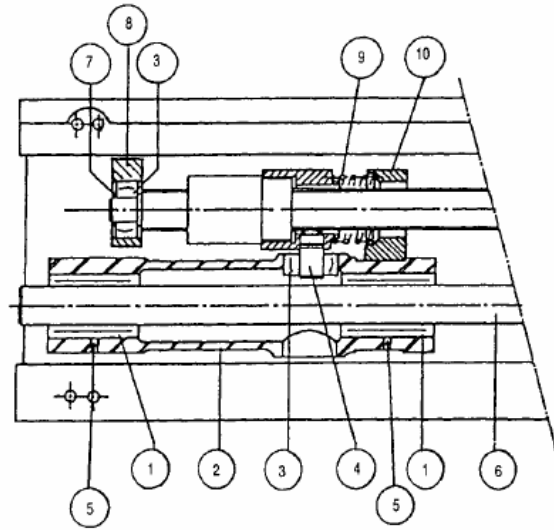
Unit No. 11  
Front side of the backgauge arm



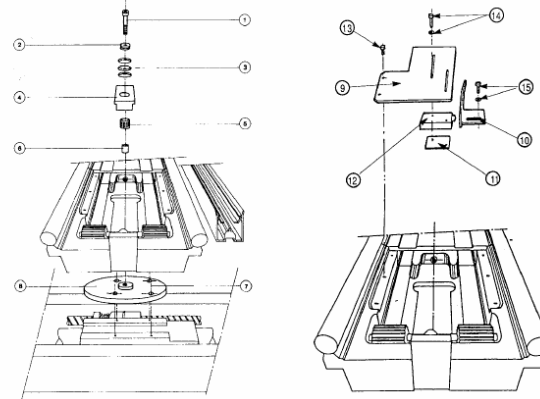
Unit No. 12  
« Z » axis crossbeam fixation on the « X1 » axis side



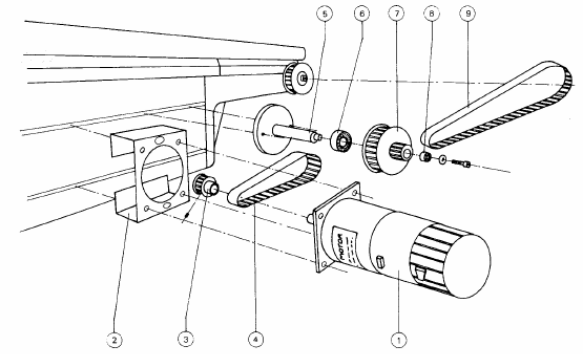
Unit No. 13  
Motorisation of left and right arm s/assembly



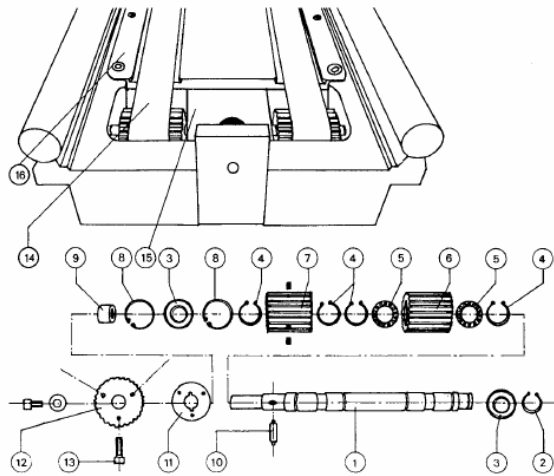
Unit No. 14  
« Z » axis crossbeam fixation on the « X2 » axis side and « X1 », « X2 » axis swivel attachment

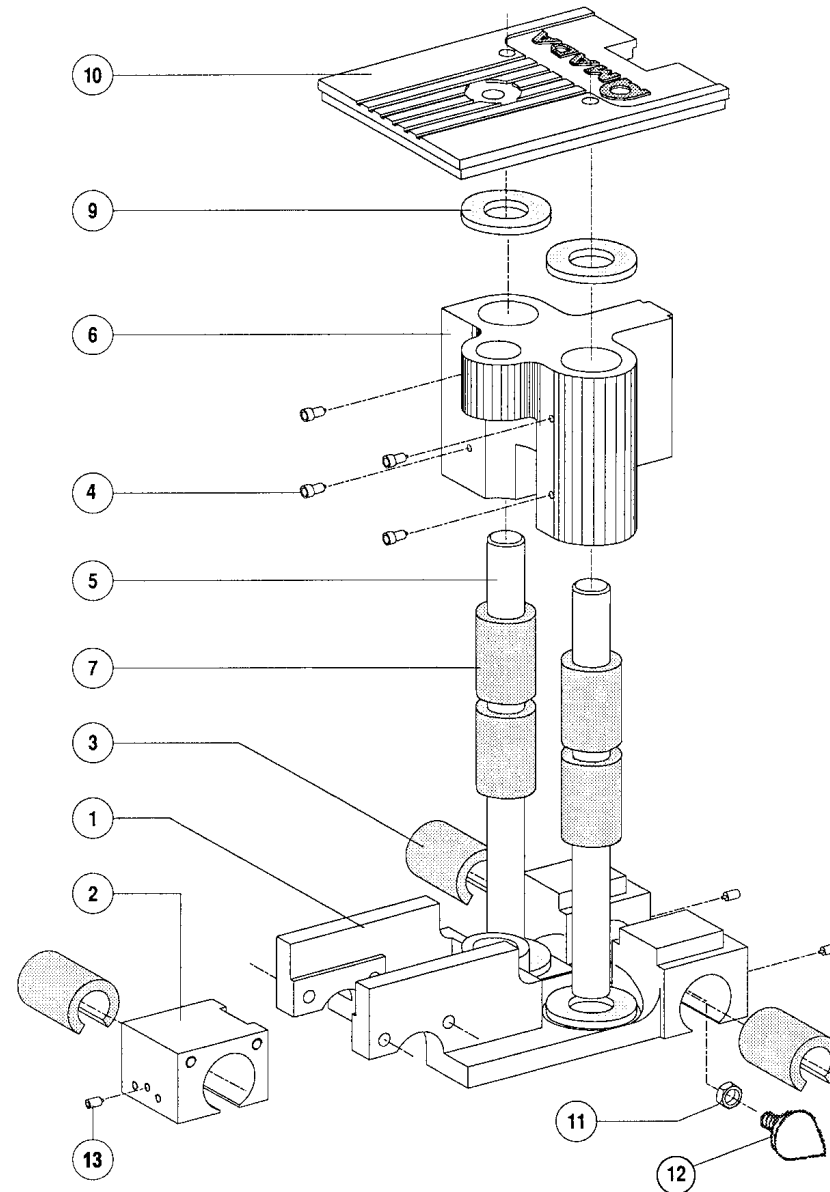


Unit No. 15  
« Z1 », « Z2 » axis motorisation

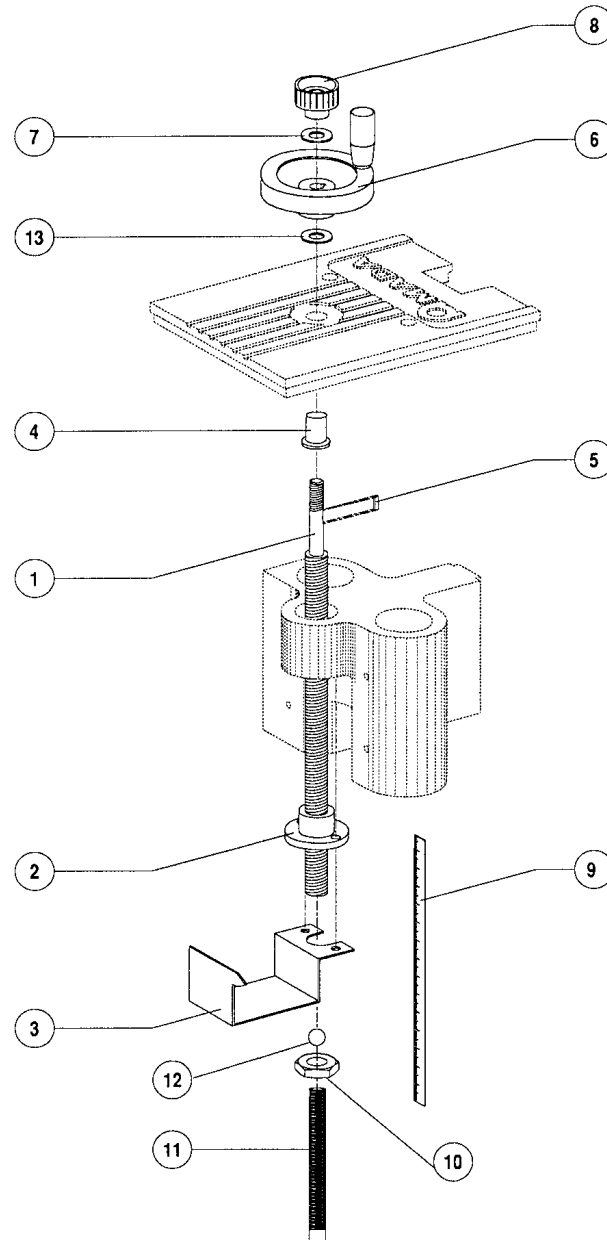


Unit No. 16  
« Z1 », « Z2 » axis drive mechanism

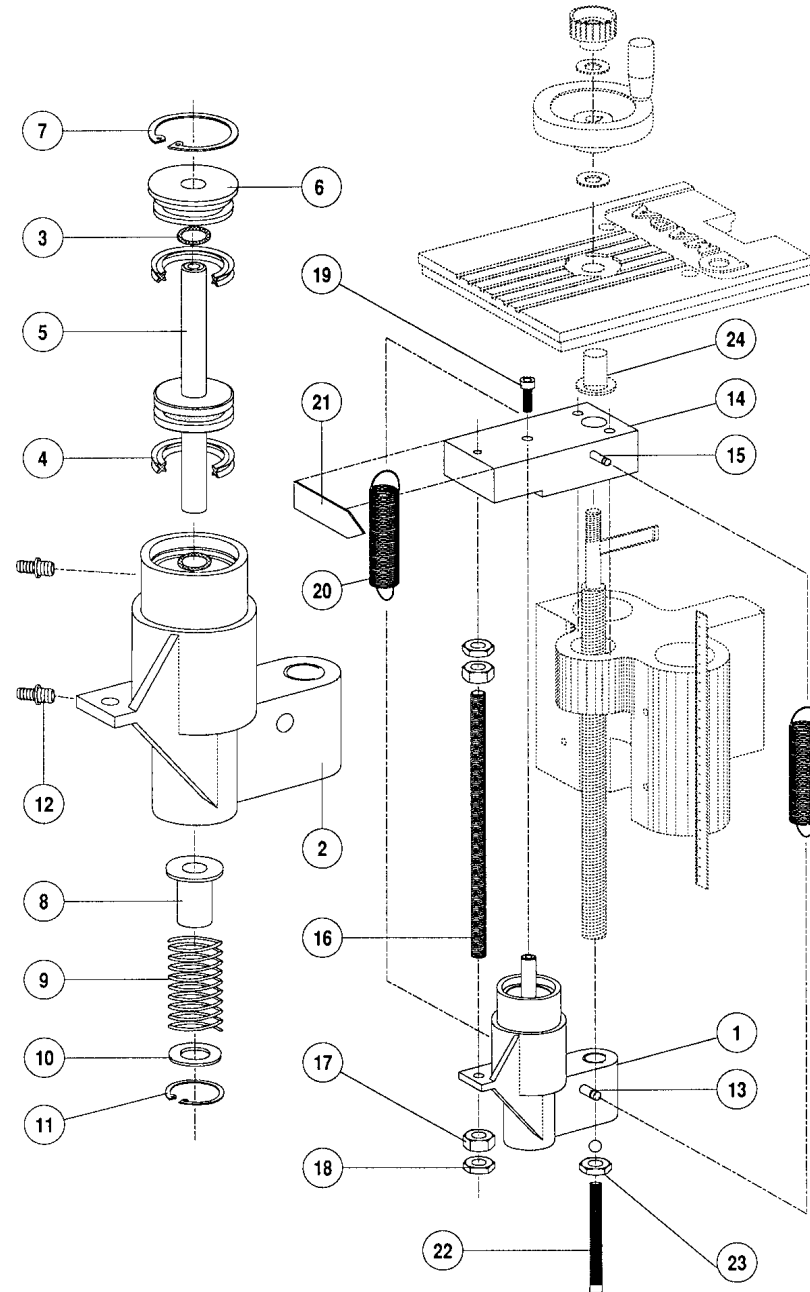




Index	Parts Number	Parts Name	Drawing No.	Type (Maker)	Qty	Machine Type	Note
1	C12084	Axis « R » machined plate			1		
2	C12098	Axis « R » rear bearing			1		
3	M23715	KN 025 P PAS ball sleeve			3		
4	C12239	Sleeve « X » and « R » blocking screw			3		
5	C12086	Axis « R » column			2		
6	C12099	Axis « R » sliding block			1		
7	M23716	KN 25 P P ball sleeve			4		
9	C12336	60 x 30 x 5 50 Sh washer			4		
10	C12118	Machined upper plate			1		
11	B35095	H M8 nut			1		
12	M03503	Rubber gauge			1		
13	M90078	Nipple		WN-LHC40M5			From 03/95



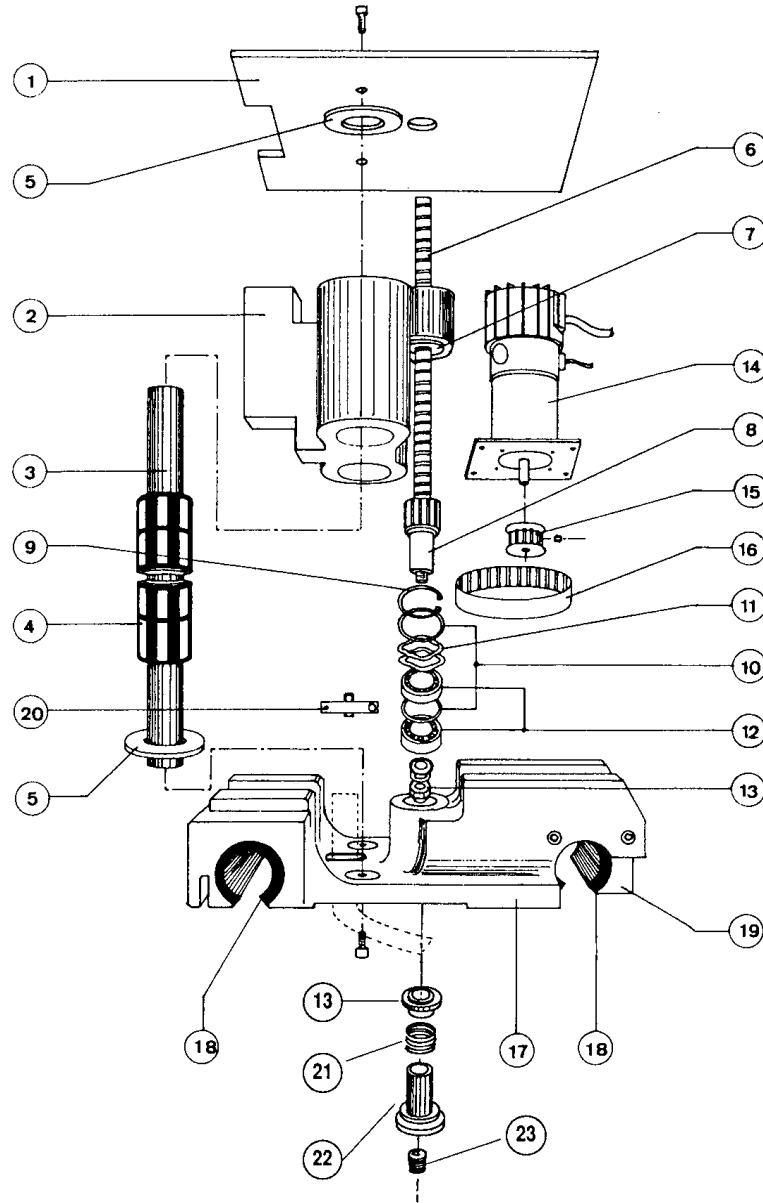
Index	Parts Number	Parts Name	Drawing No.	Type (Maker)	Qty	Machine Type	Note
1	C12223	Control screw			1		
2	C12224	Screw nu			1		
3	C12412	Axis « R » index			1		
4	H18031	FP 15 C 10 x 15 x 2 ring			1		
5	M06133	3 x 3 long. 10 mm key			1		
6	M63013	Control wheel			1		
7	B60534	Mu 10 washer			1		
8	M62066	BT 32 PF M 10 ribbed switch			1		
9	M81006	Graded rule 200 mm long.			1		
10	C15269	∅ 15,5 x 25 lg 6 ring			1		



Index	Parts Number	Parts Name	Drawing No.	Type (Maker)	Qty	Machine Type	Note
1	D40954	Cylinder unit			1		
2	C12461	Cylinder housing			1		
3	H18065	JF4 N° 7 A ring			2		
4	H18066	JF4 N°19 ring			2		
5	C12433	Cylinder rod			1		
6	C12432	Cylinder nose			1		
7		7000 Ø 36 x 1,5 circlips			1		
8	C12434	Rode gauge			1		
9	C12559	Gauge spring			1		
10	B60513	Zu 12 washer			1		
11	M01202	7000 Ø 25 x 1,2 circlips			1		
12	H50310	RC 04-3 needle			2		
13	C12737	Return movement lower axis			1		
14	C12435	Guiding plate			1		
15	C12738	Return movement upper axis			2		
16	C12456	M6 long. 115 mm threaded rod			1		
17	B35004	Hu M6 nut			2		



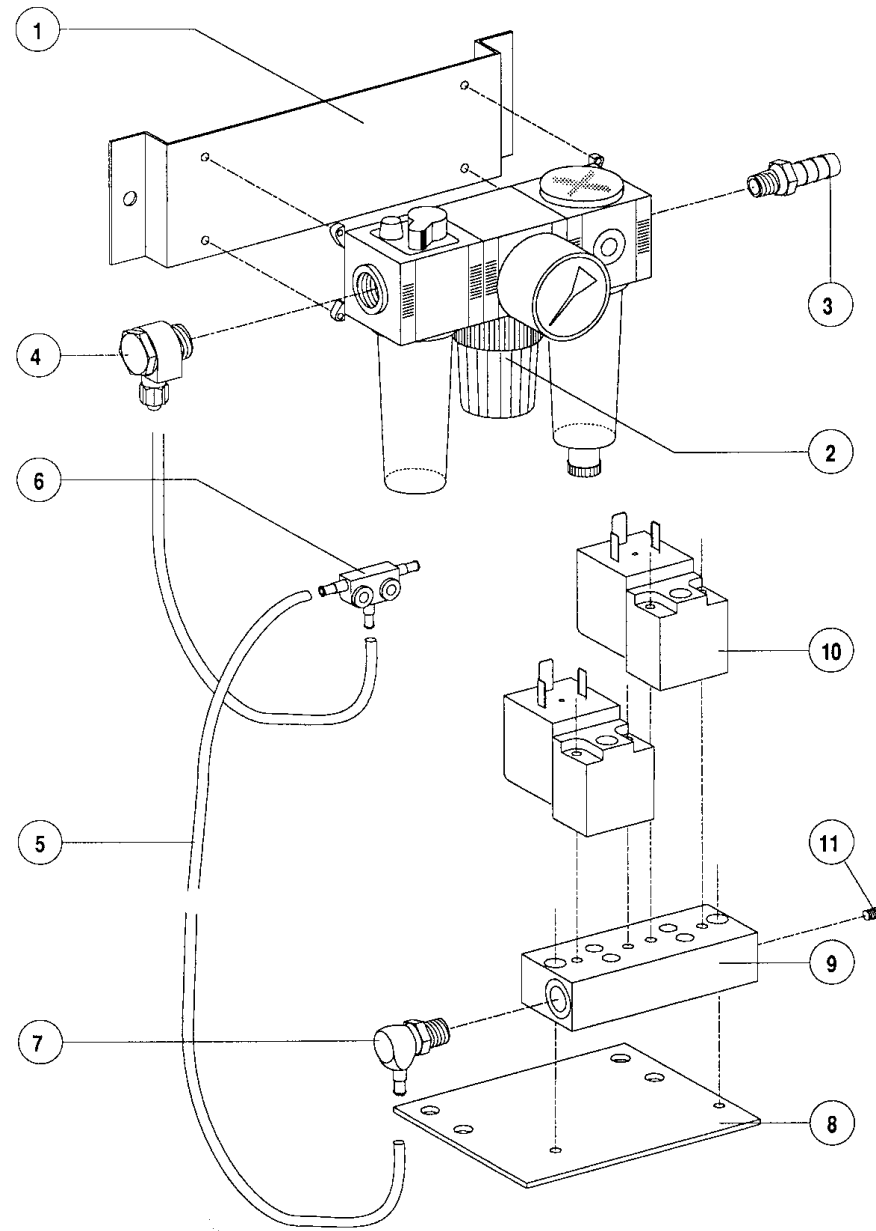




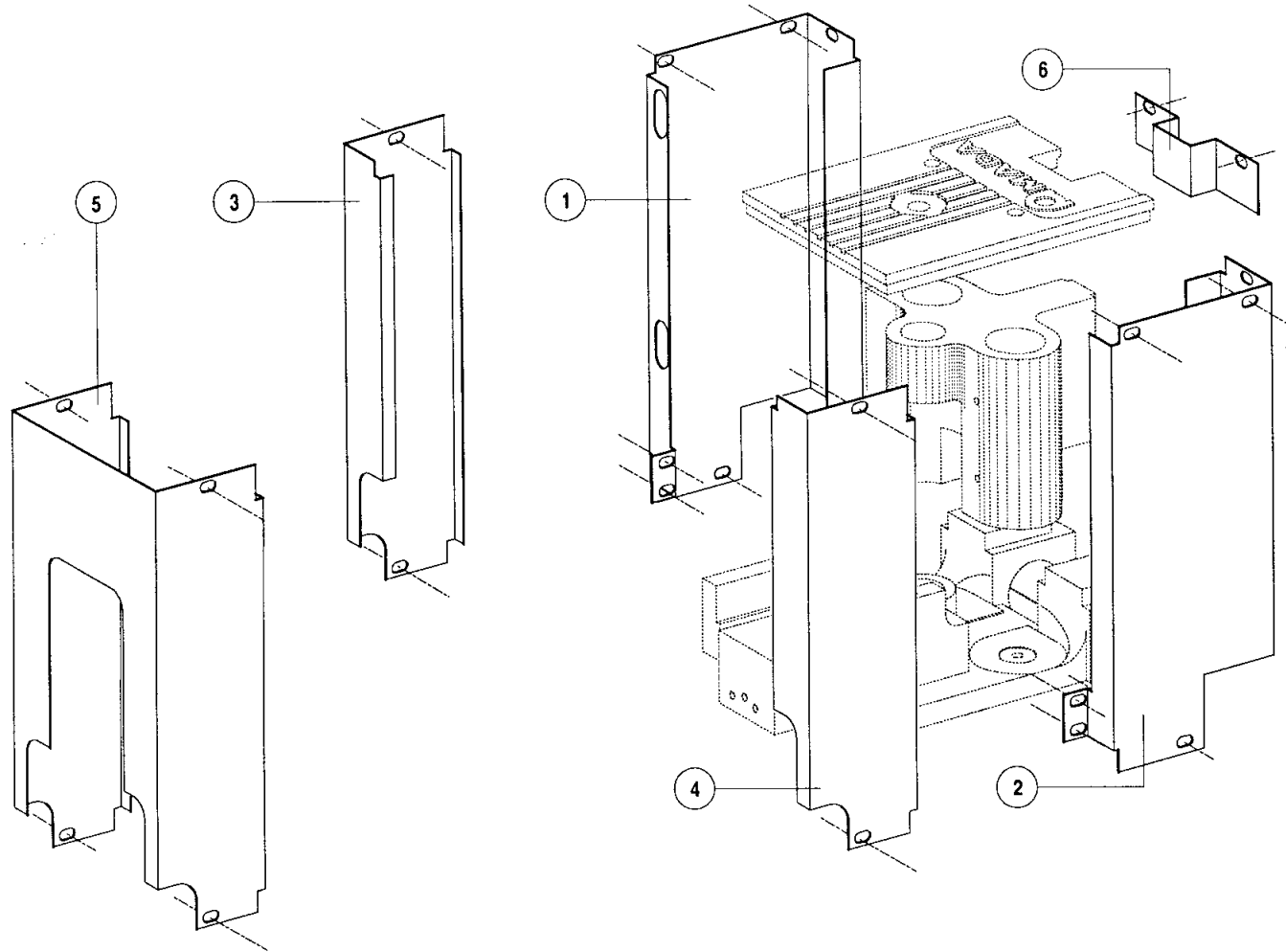
Index	Parts Number	Parts Name	Drawing No.	Type (Maker)	Qty	Machine Type	Note
	D40758	Motorized « backgauge finger system » s/u		CN1 – CN2	2		
1	C12118	Upper plate			1		
2	C12099	Carriage			1		
3	C12086	Column			2		
4	M23716	Ball sleeve		KN 25 PP	4		
5	C12336	Elastomer washer		5 x 30 x 60 50 SH	4		
6	C12096	Ball screw		D12 PA54	1		
7	C12089	Nut flange			1		
8	C12087	Driven pulley			1		
9	M01242	Circlips		7000 – 30 x 1,5	1		
10	C12246	Support spacer			2		
11	B71010	ONDUFLEX washer		54 – 23 – 01	2		
12	M29908	Bearing		7200 BEP	2		
13	C14673	Washer			1		
14	E04581	CC 110 W motor		L511012EL6	1		
15	C12088	Driving pulley		T5-16	1		
16	M37840	Belt		T5-16-200	1		



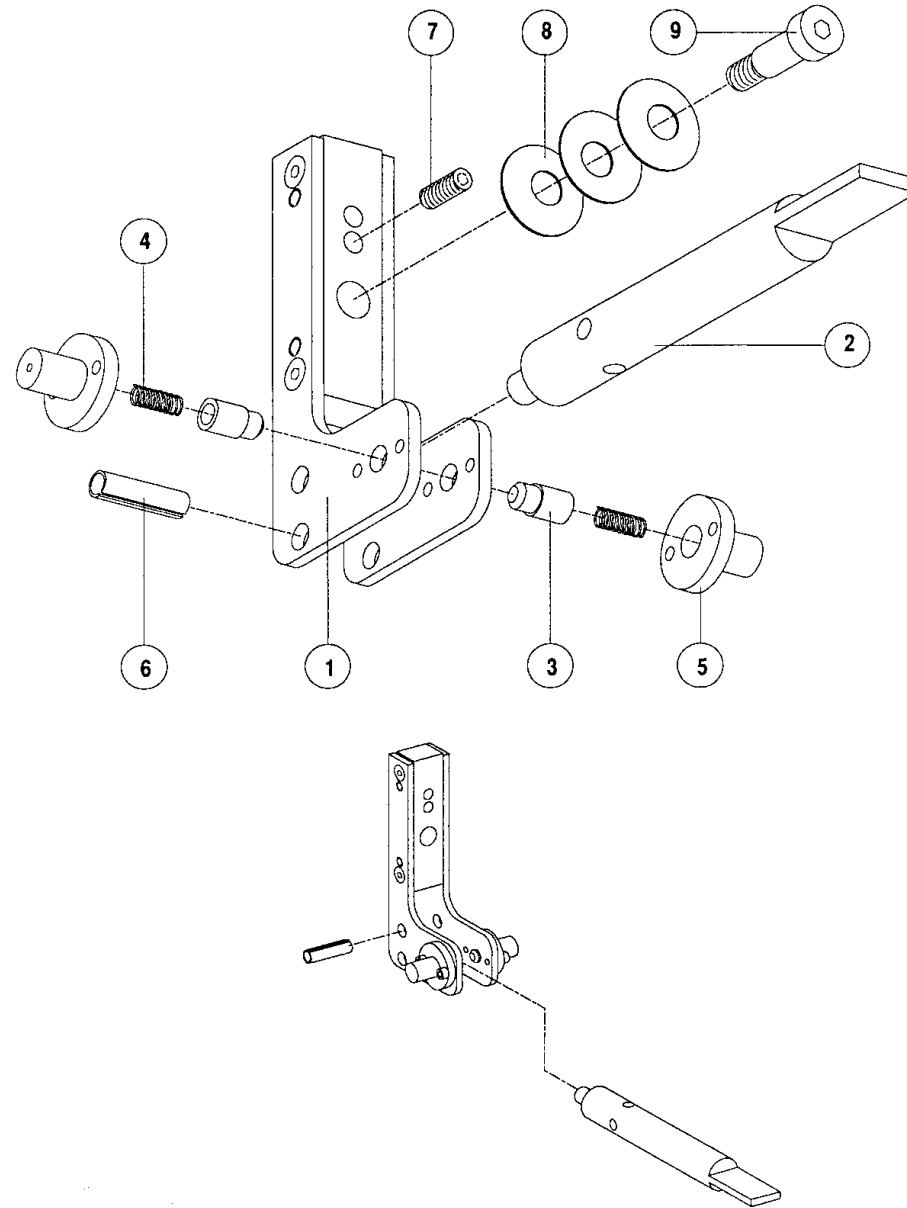




Index	Parts Number	Parts Name	Drawing No.	Type (Maker)	Qty	Machine Type	Note
1	C12638	Filter support FRL			1		
2	H50298	FRL (4300) 4018 filter			1		
3	H70946	0123 10 13 sleeve			1		
4	H18063	BANJO LCK 1/4 PK 4 coupling			1		
5	H18064	4 x 6 hose					
		Specify the length to be ordered					
6	H18062	FCN 1/8 PK 4 plug-in T			1		
		Qty + 1 for 2 « Back gauge finger system »					
7	H18061	LCN 1/8 PK 4 plug-in coupling			3		
8	C12604	Solenoid valve support			1		
9	H18060	1825 – 503 – 237 base plate			1		
10	H18059	08200195101 solenoid valve			2		
11	B06561	CHc M4 x 16 bruni screw			1		
	E18338	LUTZ rectifying head			2		



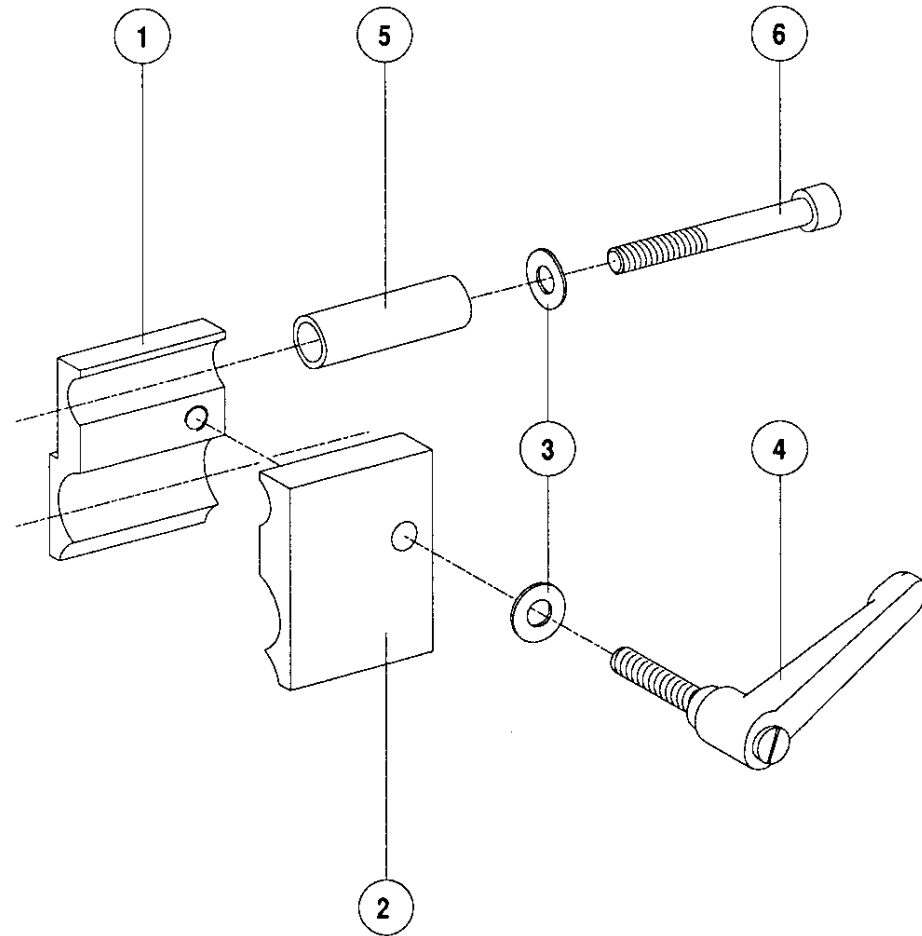
Index	Parts Number	Parts Name	Drawing No.	Type (Maker)	Qty	Machine Type	Note
1	C12116	Front right cover			1		All models
2	C12115	Front left cover			1		All models
3	C12438	Back right cover			1		Only pneumatic
4	C12437	Back left cover			1		Only pneumatic
5	C12117	Back cover			1		For manual and motorized
6	C12603	Upper front cover			1		



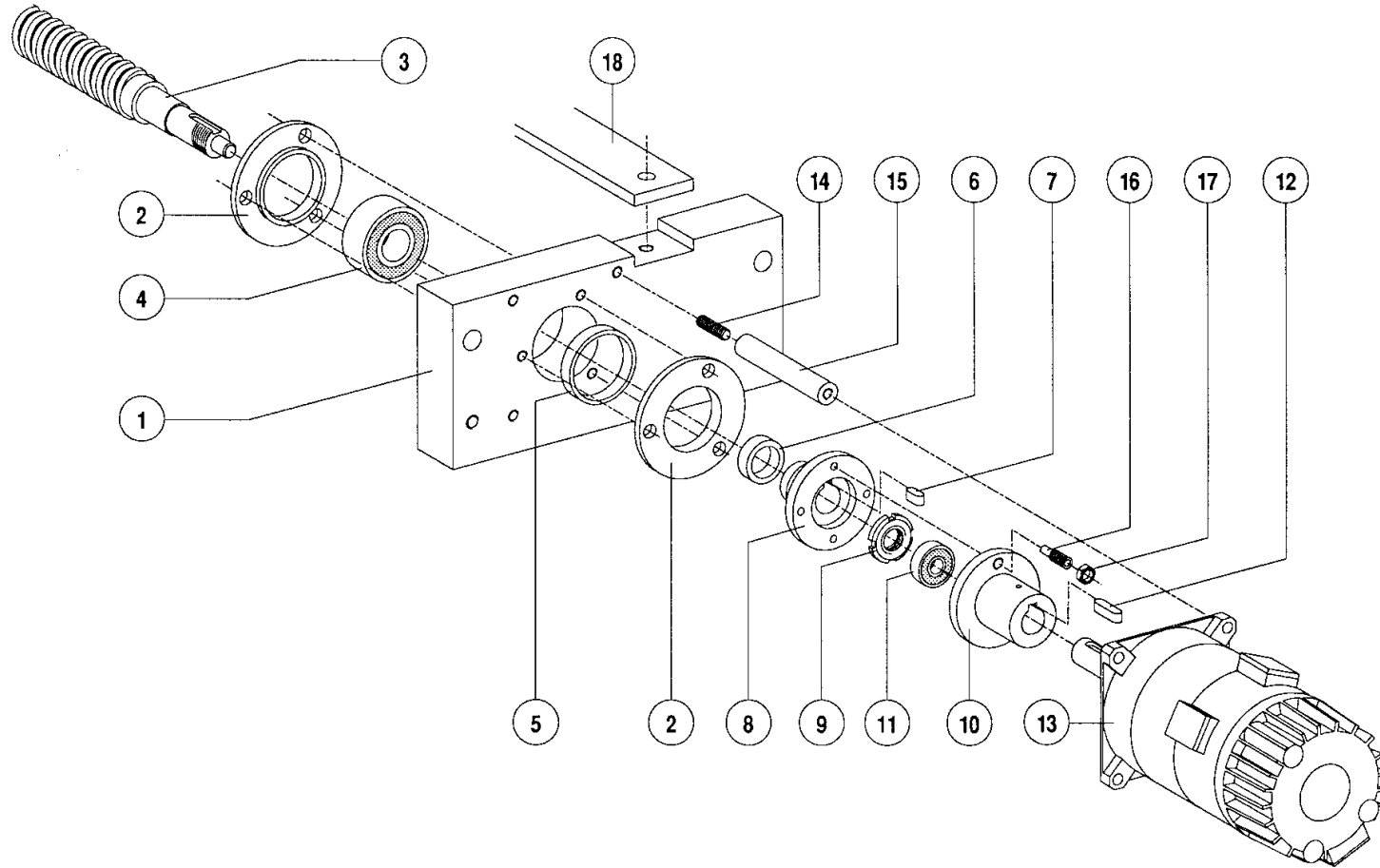
Index	Parts Number	Parts Name	Drawing No.	Type (Maker)	Qty	Machine Type	Note
	D40925	Finger unit system					
1	D40870	Sub-unit support finger			1		
2	C12092	Chrome plated gauge finger			1		
	D40871	Joint sub-unit					Items 3, 4 and 5
3	C12091	Finger pusher			2		
4	M46982	TO 4 x 8 x 20 spring			2		
5	C12090	Finger nail			2		
6	M10168	Mecanindus pin			1		
7	B14167	Hc M8 x 20 BP screw			1		
8	B70556	RS 34 x 12,3 x 1 washer			3		
9	B22620	CHc M10 x 25 shouldered screw			1		

B Assembly direction on B.G. fixed on the lower beam of the machine

**NOTE :** According to A or B assembly direction, the spring pin fits into either hole



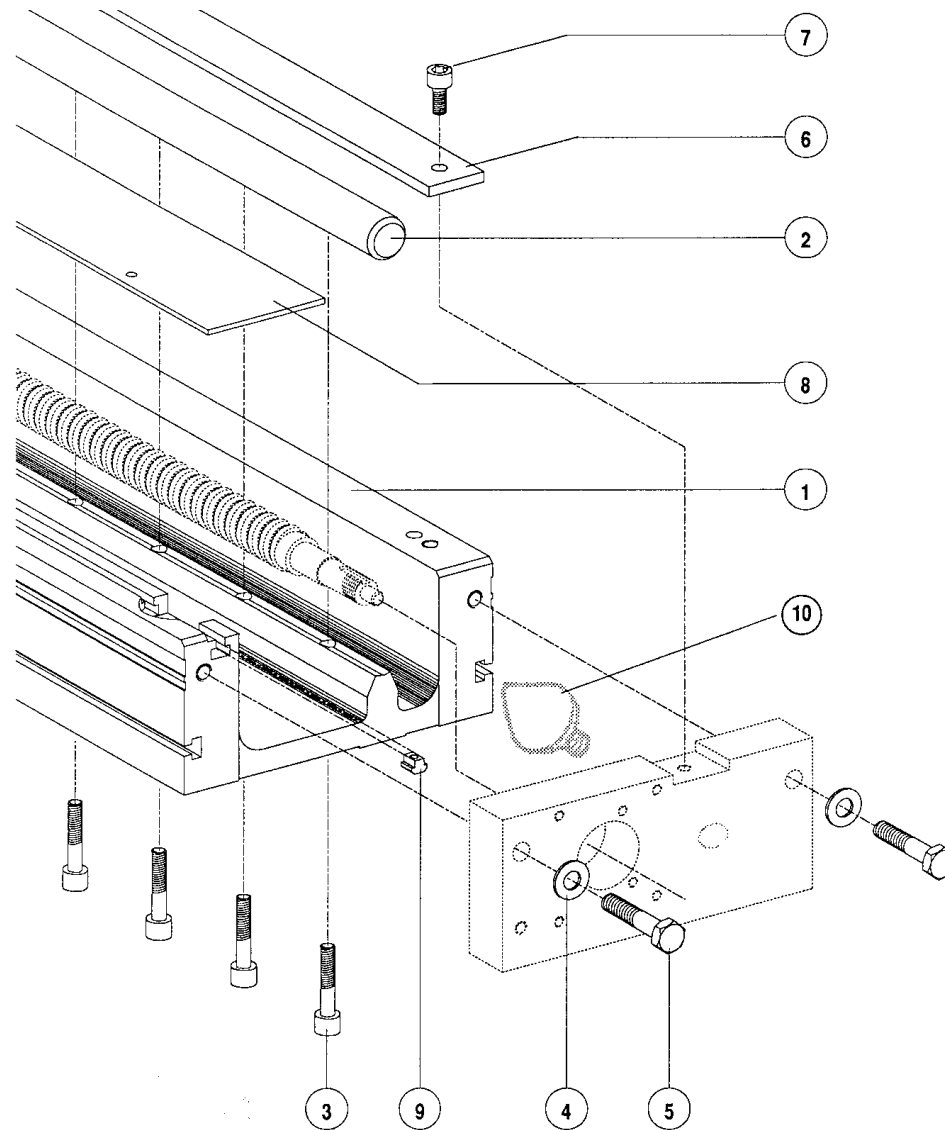




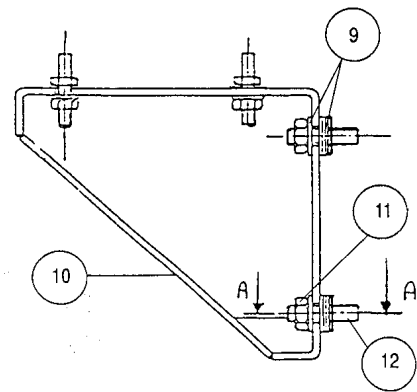
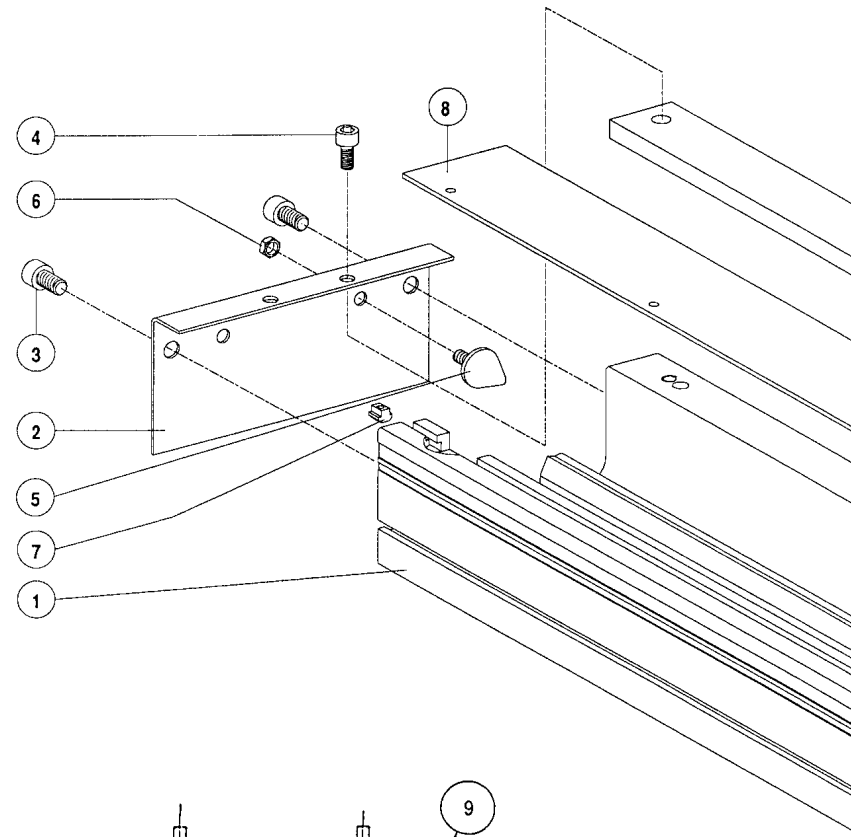
Index	Parts Number	Parts Name	Drawing No.	Type (Maker)	Qty	Machine Type	Note
1	C12307	10 mm screw rear bearing			1		Glued to item 14 LOCTITIE 222
2	C12300	Support washer			2		
3	C12298	∅ 25 ball screw			1		
4	M30007	3203 A 2 RS 1 bearing			1		
5	C16899	∅ 40 Lg. 7,5 m spacer ring			1		
6	C12683	∅ 23 Lg. 7,5 m spacer ring			1		
7	M06134	5 x 5 x 12 round ends key			1		
8	C12301	Ball screw coupling flange			1		
9	B55012	KM 2 SKF nut			1		
10	C12303	Motor coupling flange			1		
11	M30675	608 2 RS bearing			1		
12		5 x 5 x 20 round ends key			1		Supplied with the motor
13	E60216	L720/012 EL7 500p encoder motor			1		Only for NC1- NC2
	E60217	L720/012 ELX250p encoder motor			1		Only for DA 58
14	B14134	Hc BP M6 x 20 Cl 10.9 bruni screw			4		
15	C12306	Motorization column			4		
16	C12424	Coupling safety screw			1		



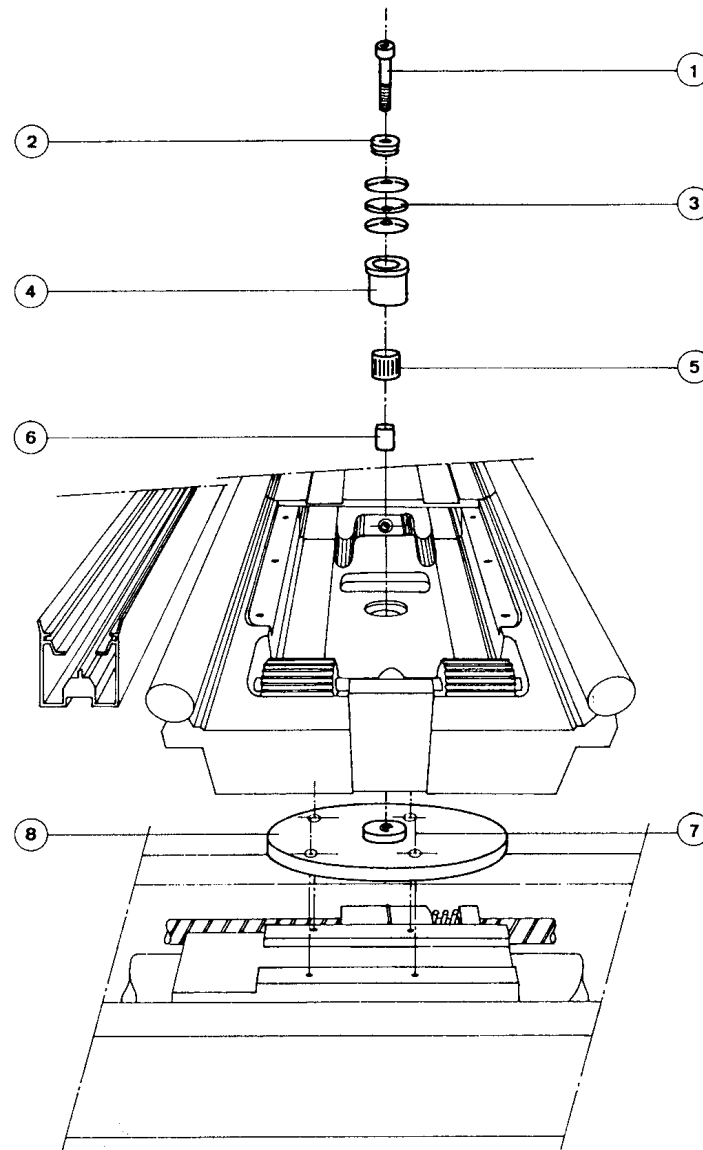




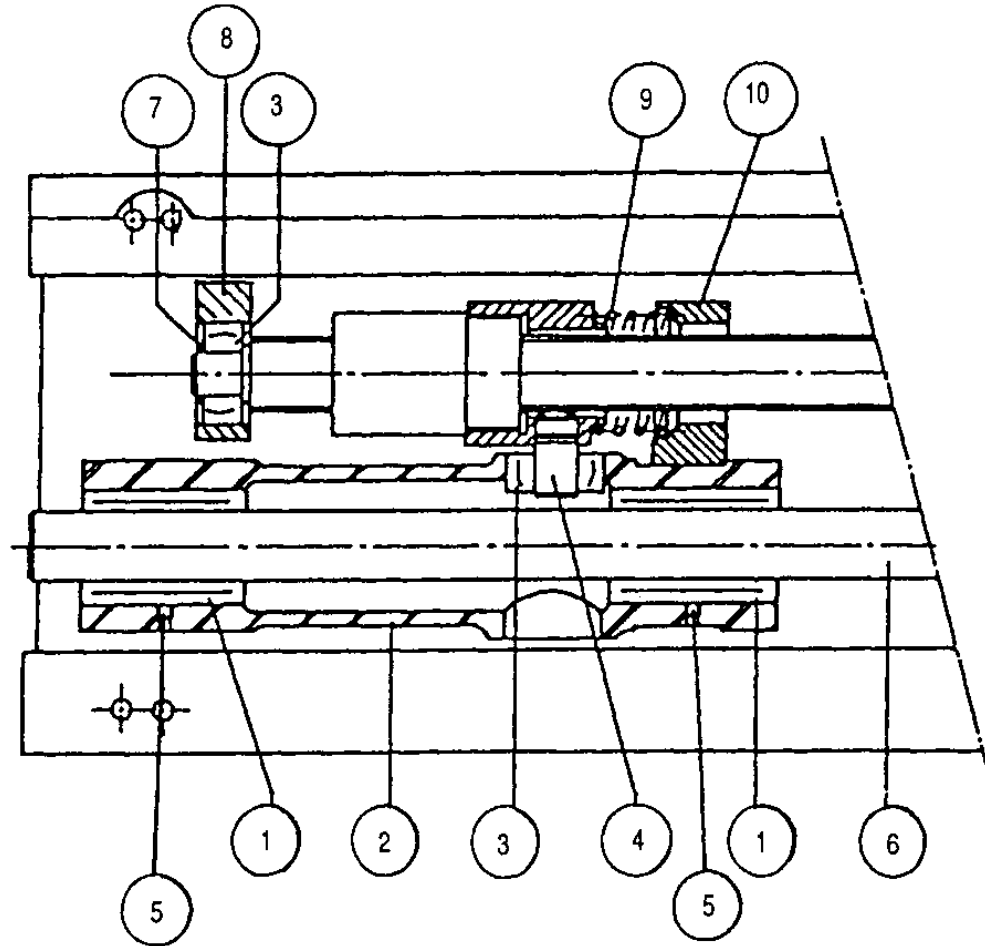
Index	Parts Number	Parts Name	Drawing No.	Type (Maker)	Qty	Machine Type	Note
1	C12369	X1 – X2 machined arm			1		
2	C12065	X1 – X2 guiding arm			1		
3	B06766	CHc M8 x 45 bruni screw			13		Glued to item 1 LOCTITE 222
4	B60534	Mu 10 washer			2		
5	B00228	H M10 x 50 bruni screw			2		
6	C12372	Column protection			1		
7	B06764	CHc M8 x 20 bruni screw			2		
8	C12375	Screw protection plate			1		For AP and HFB
	C12376	Screw protection plate			1		For IT2
9	B40003	NORELEM NLM 706-05 nut			4		
10	M03503	Adjustment excentric			2		



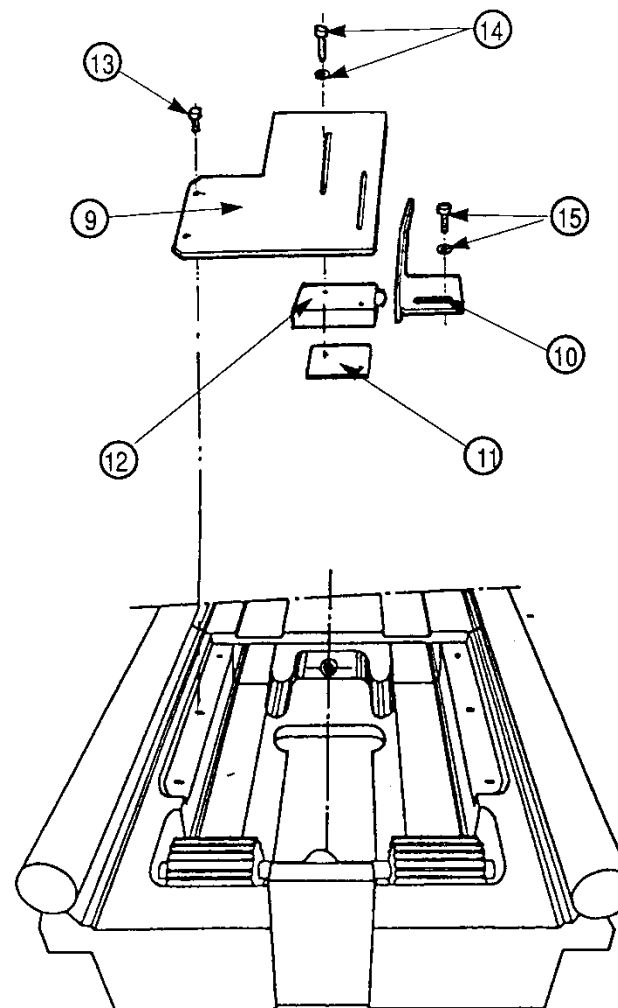
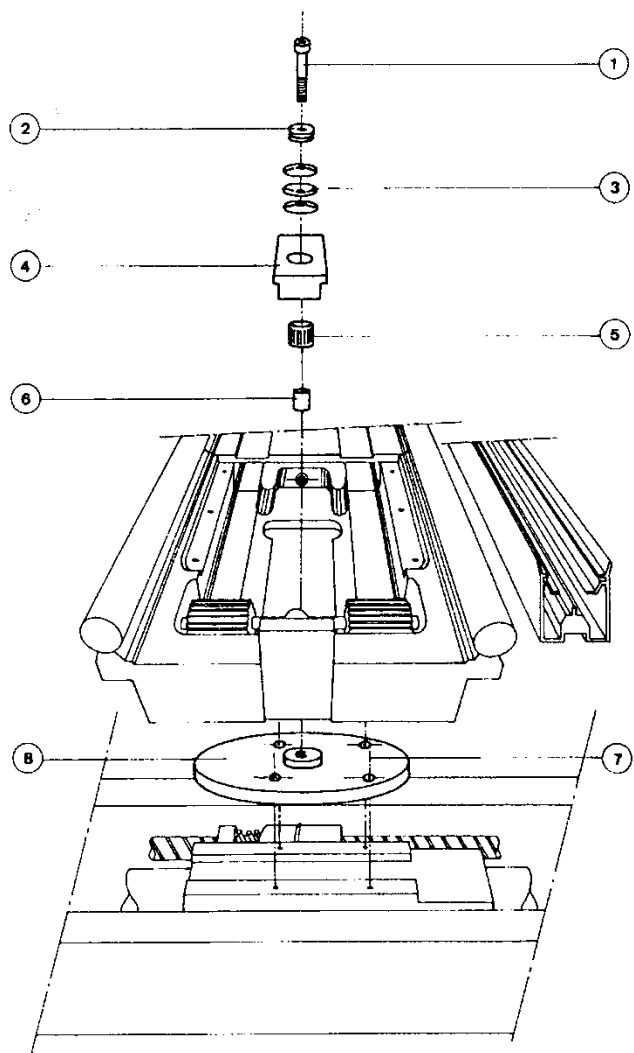
Index	Parts Number	Parts Name	Drawing No.	Type (Maker)	Qty	Machine Type	Note
1	C12369	X1 – X2 machined arm			1		
2	C12374	Closing sheet			1		
3	B06781	CHc M10 x 16 screw			2		
4	B06700	CHc M8 x 10 screw			1		
5	M03503	Damping device PAULSTRA 512251			2		
6	B35035	H M8 nut			1		
7	B38001	NORELEM NLM 706-05 nut			4		
8	C12375	Screw protection plate			1		
9	B60534	Washer			60		
10	C12145	Arm support			2		
11	B35036	Nut			12		
12	B14203	Flat end screw			12		



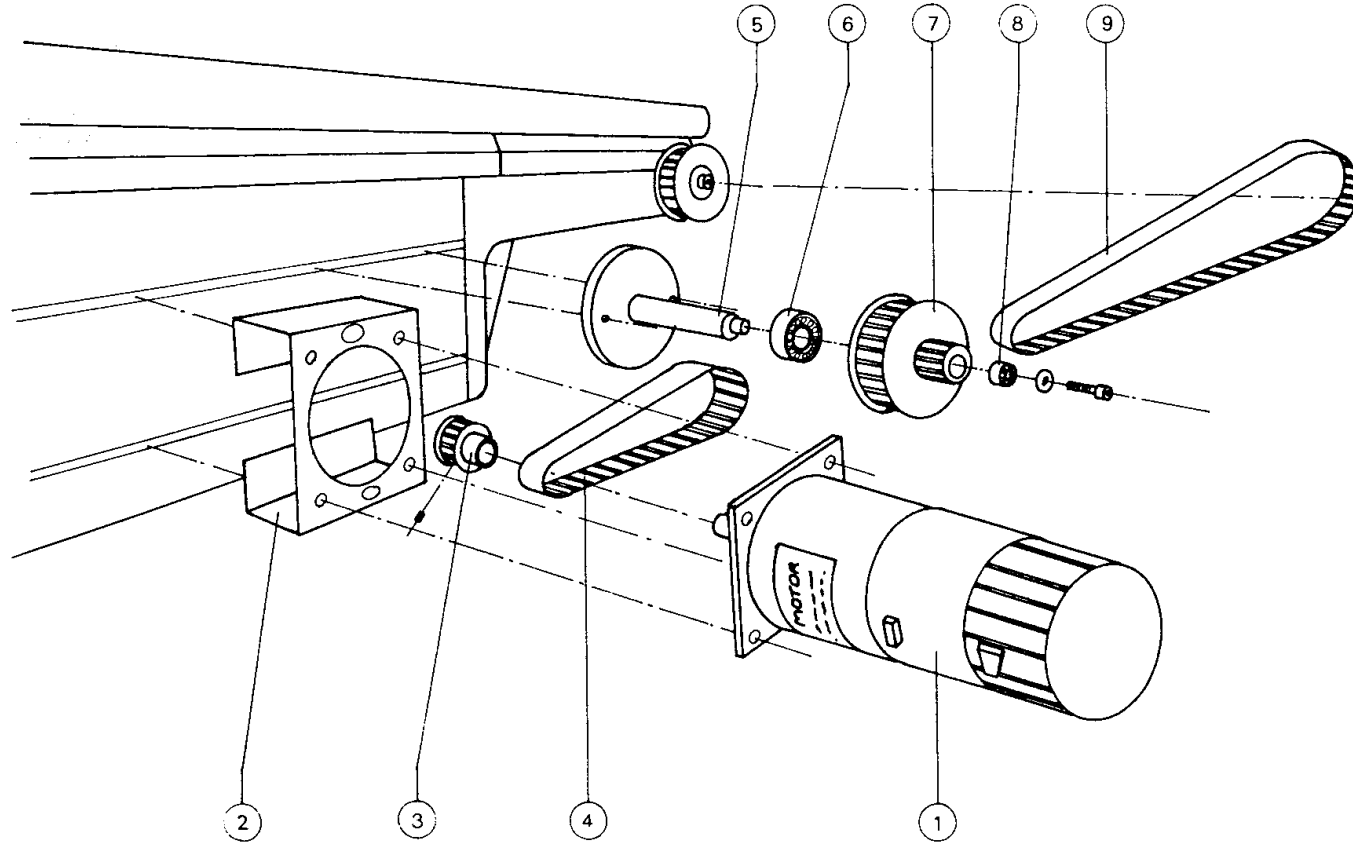
Index	Parts Number	Parts Name	Drawing No.	Type (Maker)	Qty	Machine Type	Note
1	B06785	Screw		CHc M10 x 35	1		
2	B60534	M010 washers			1		
3	B70555	40 x 20,4 x 1 spring washers			3		
4	C12107	« Z » journal			1		
5	M23717	NA HK 20162RS bearing			1		
6	M08252	INA LR 15 x 20 – 23 ring			1		
7	B06616	CHc M5 x 12 screw			4		
8	C12373	Crossbeam rest plate			1		« Molykotte » grease



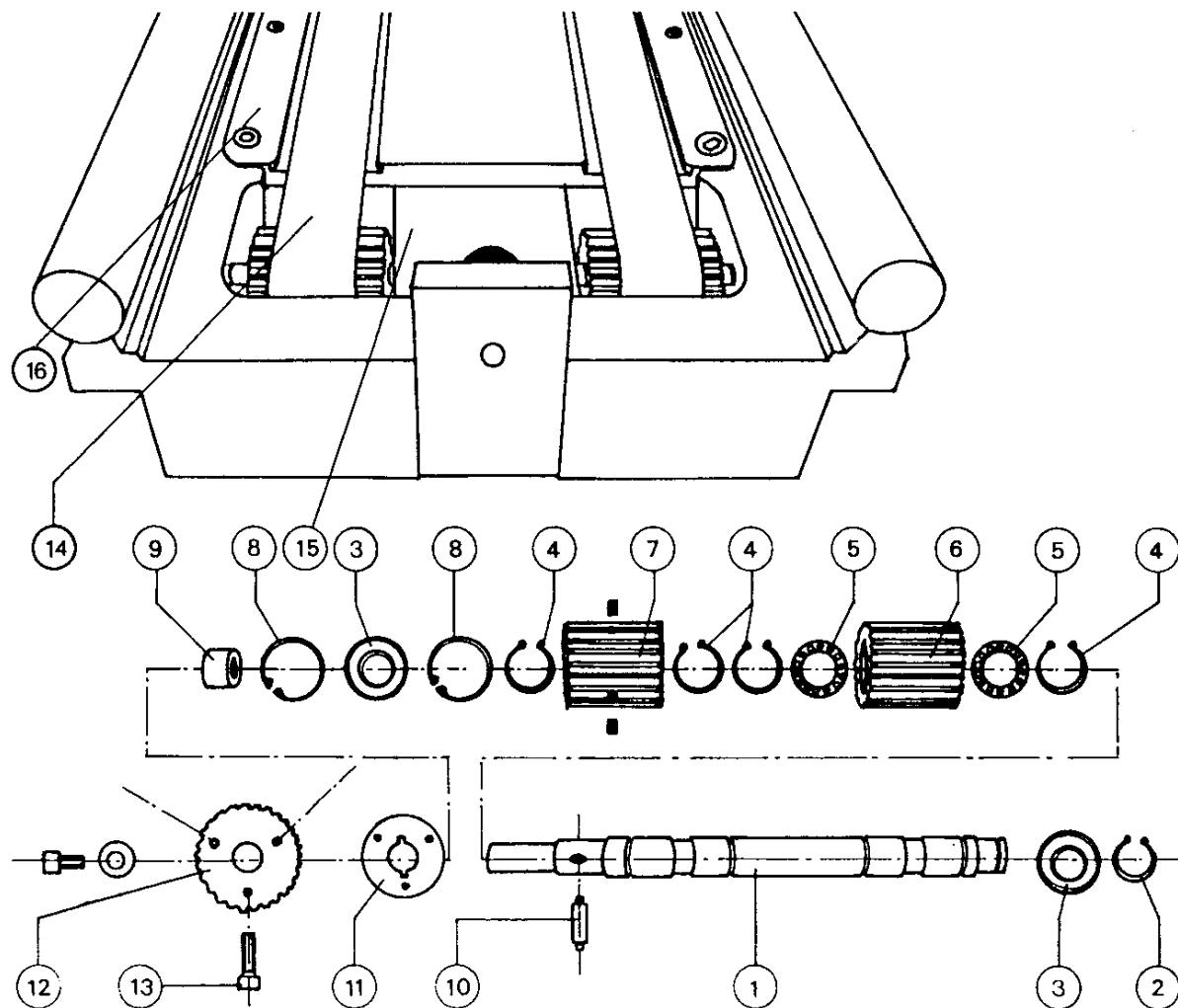
Index	Parts Number	Parts Name	Drawing No.	Type (Maker)	Qty	Machine Type	Note
1	M23715	Ball sleeve		KNO25PPAS	2		
2	C12370	X1 X2 machined ram			1		
3	M31031	Bearing		2202RS	2		
4	C12130	Assembled carriage drive			1		
5	M90078	VNLHC 40M5 coupling			2		
6	C12065	Axis column			1		
7	M01006	E circlips		Ø 15 x 1	1		
8	C12304	10 threaded screw front support			1		
9	C14909	Compression spring		Lg 38 Ø 40	1		
10	C16680	Prestressed spring base			1		
	B06680	CHc M6 screw		Ø 6 x 60	2		



Index	Parts Number	Parts Name	Drawing No.	Type (Maker)	Qty	Machine Type	Note
1	B06785	Screw		CHc M10 x 35	1		
2	B60534	Washer		Mu10	1		
3	B70555	40 x 20,4 x 1 spring washer			3		
4	C12104	Sliding stop « Z »			1		
5	M23717	INA HK 2016-2RS bearing			1		
6	M08252	INA LR 15 x 20 – 23 ring			1		
7	B06616	CHc M5 x 12 screw			4		
8	C12373	Crossbeam rest plate			1		« Molykotte » grease
9	C14918	Support plate			1		
10	C12426	Shaft			1		
	C18555	Shaft			1		From 10/96
11	C13053	Clamping plate			1		
12	E00726	Position switch		MP320 – 1MS/375/600	1		
13	B10615	Screw		FHc 6 x 12	2		
14	B00010	H M3 x 20			2		
	B60529	Mu3 washer			2		
15	B06663	M6 x 16 CHc screw			2		
	B60532	Mu6 washer			X		



Index	Parts Number	Parts Name	Drawing No.	Type (Maker)	Qty	Machine Type	Note
1	E04581	110 W motor		L511012 EL 6	1		
2	C12297	Motor brace			1		
3	C12141	Motor pulley		T5/14	1		
4	M37815	Motor belt		10T5/305	1		
5	C12144	Intermediary axis			1		
6	M30514	Axis bearing		6001 – 2RS	1		
7	C12143	Intermediary pulley		C12143	1		
8	M30516	End bearing		618/8	1		
9	M37841	Z transmission belt		10T5/630	1		



Index	Parts Number	Parts Name	Drawing No.	Type (Maker)	Qty	Machine Type	Note
1	C10108	Drive axis			1		
2	M01006	E 15 x 1 circlips			1		
3	M30604	Bearing		6002 2RS	2		
4	M01008	E 17 x 1 circlips			4		
5	M30515	Bearing		61803 – 2RS	2		
6	C121106	Free pulley		T5/24	1		
7	C12105	Drive pulley		T5/24	1		
8	M01203	I 32 x 1 circlips			2		
9	C12109	Spacer			1		
12	C12110	Pulley		T5/28	1		
14	M37830	Z drive belt		Lg 3000 mm	2	50.20	Material code per meter
	M37830	Z drive belt		Lg 3000 mm	2	80.25	
	M37830	Z drive belt		Lg 4020 mm	2	100.3	
15	C13101	Pulley safety casing			2		
16	C12256	Closing plate			2		

**NOTE :** Kit C 58330 composed of index 10 + 11