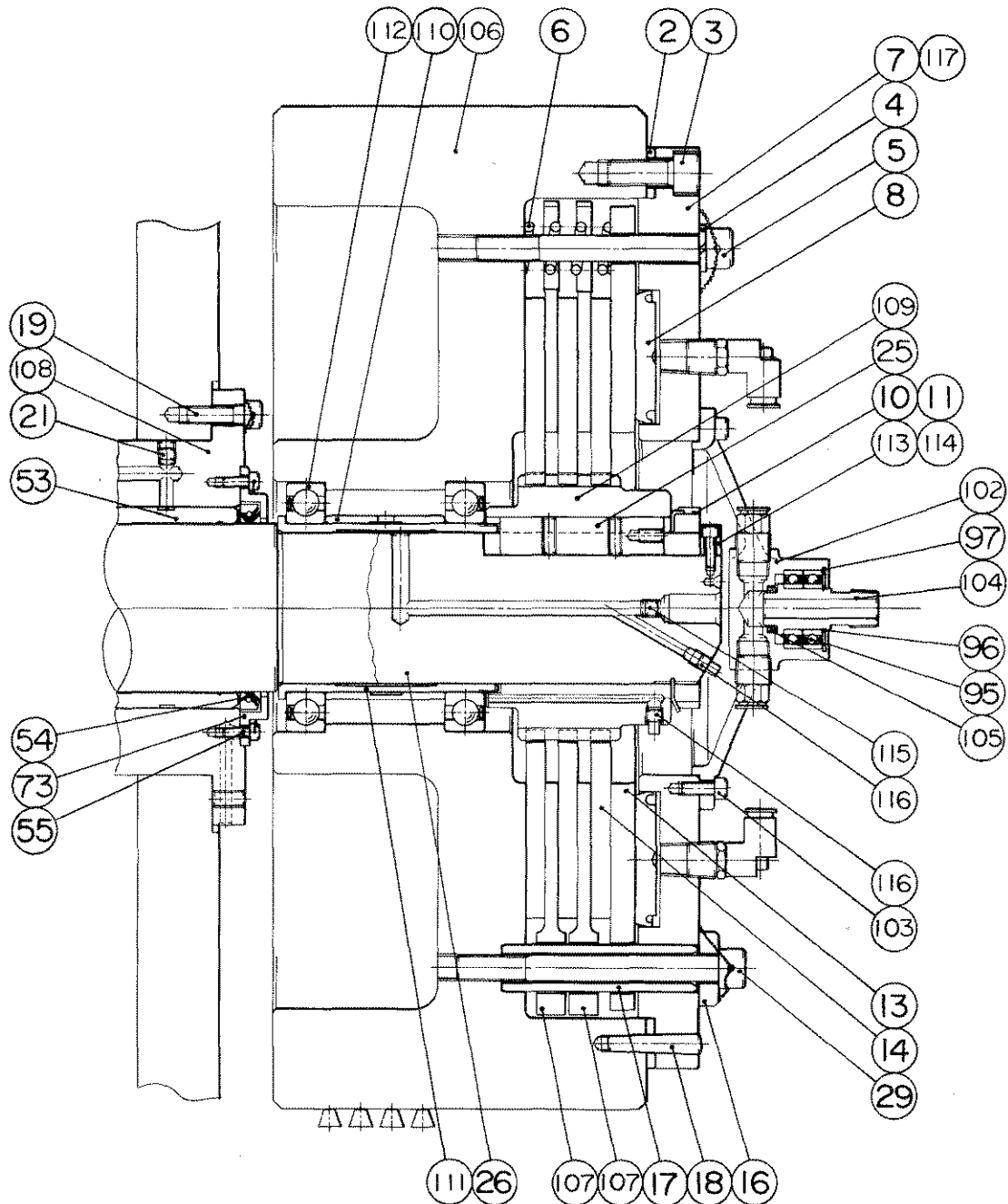
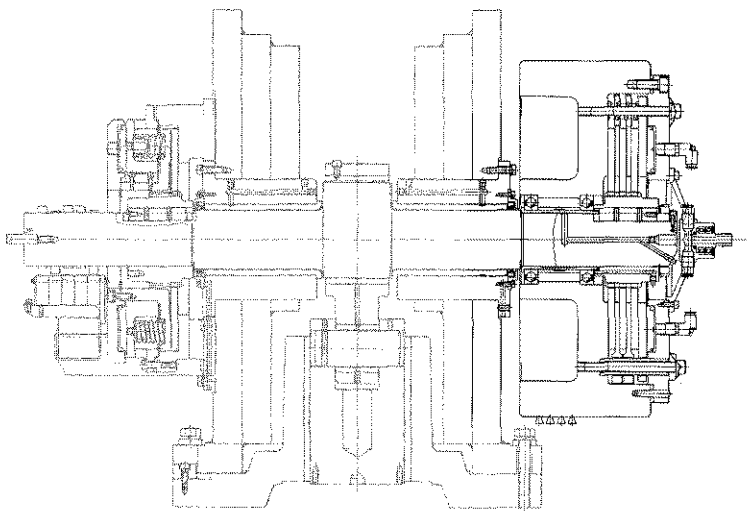


Unit No. 03  
Drive

From serial No. C67325 (506072), C57585 (505072),  
C55167 (505050) and after.

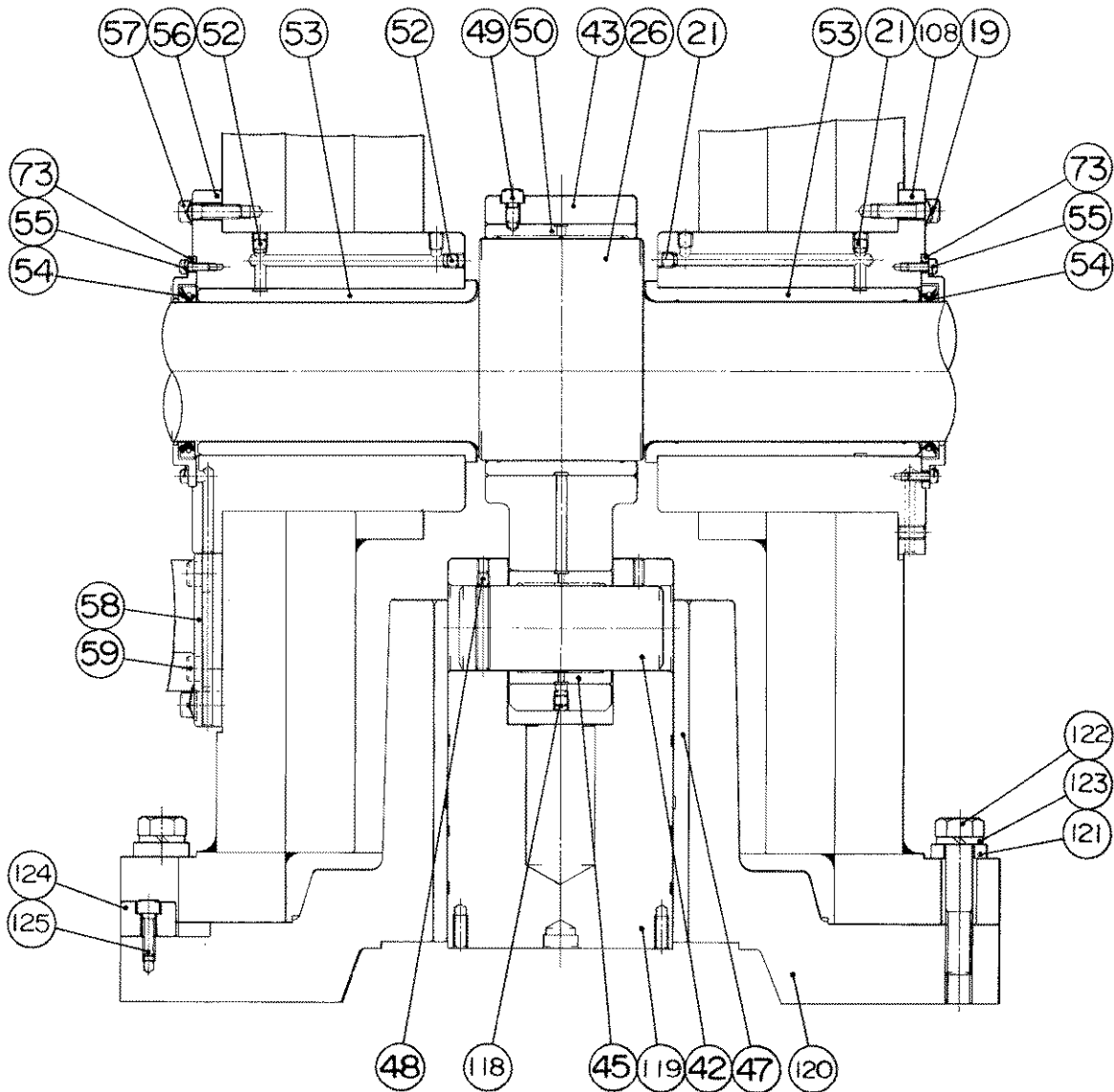
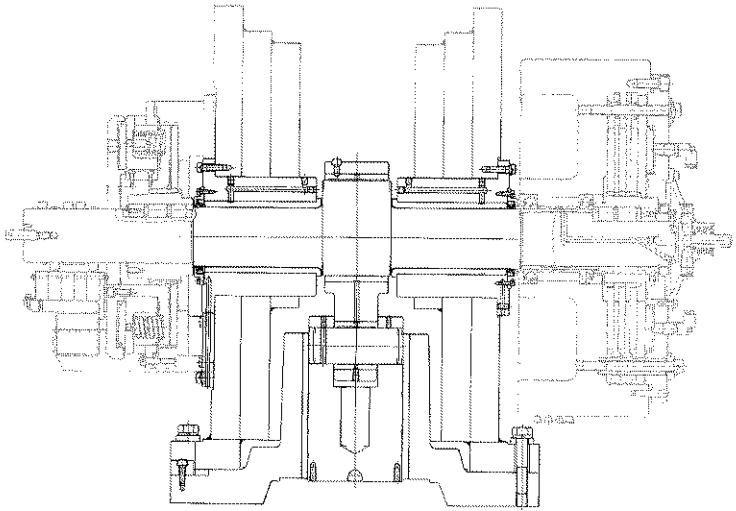


Index No.	Code No.	Parts Name	Drawing No. or Type	Q'ty			Note
				506072	505072	505050	
2	74159103	Shim	821025	1	1	1	
3		Cap screw	M16 x 40	4	4	4	
4		Spring washer	M16	6	6	6	
5	74159633	Cap screw (with wiring hole)	M16 x 140	6	6	6	
6	74159127	Clutch spring	821041a	6	6	6	
7	74159128	Clutch cylinder	821023e	1	1	1	
8	74159105	Clutch piston	801015	2	2	2	
10	74159626	Crown washer	AW18	1	1	1	
11	74159627	Crown nut	AN18	1	1	1	
13	74159424	Clutch plate (B)	821026b	1	1	1	
14	74159117	Friction plate	801016a	3	3	3	
16	74159502	Washer	821029	6	6	6	
17	74159432	Guide shaft	821028a	6	6	6	
18	74159508	Taper pin (with screw)	10 $\phi$ x 56	2	2	2	
19		Cap screw (with wiring hole)	M10 x 35	6	6	6	
21		Plug	PT 1/8	2	2	2	
25	74159121	Crank key	801023b	1	1	1	
26	74159267	Crank shaft	801005 $\ell$	1	1	1	
29	74159506	Cap screw (with wiring hole)	M16 x 160	6	6	6	
53		Crank bushing	801011d	2	2	2	
54	74159602	Oil seal	SB-100 x 125 x 13	2	2	2	
55		Cap screw (with wiring hole)	M6 x 16	8	8	8	
73	74159227	Seal retainer	801032	2	2	2	
95	74159213	Ball bearing	#6005ZZ	1	1	1	
96	74159526	Snap ring	STW-25	1	1	1	
97	74159527	Snap ring	RTW-47	1	1	1	
102		Swivel body	821081a	1	1	1	
103		Cap screw	M8 x 20	4	4	4	



Unit No. 03  
Drive

From serial No. C67325 (506072), C57585 (505072),  
C55167 (505050) and after.



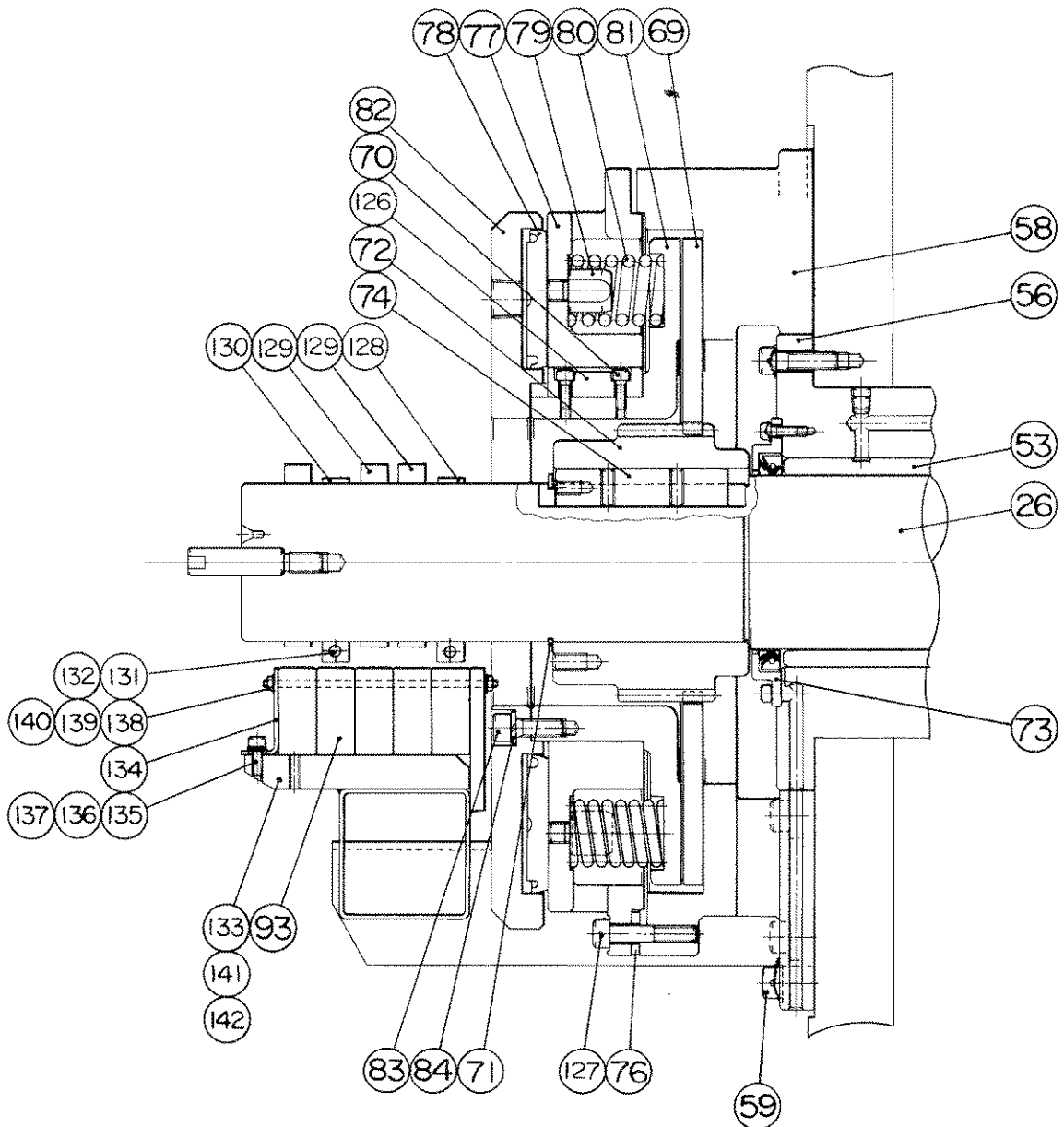
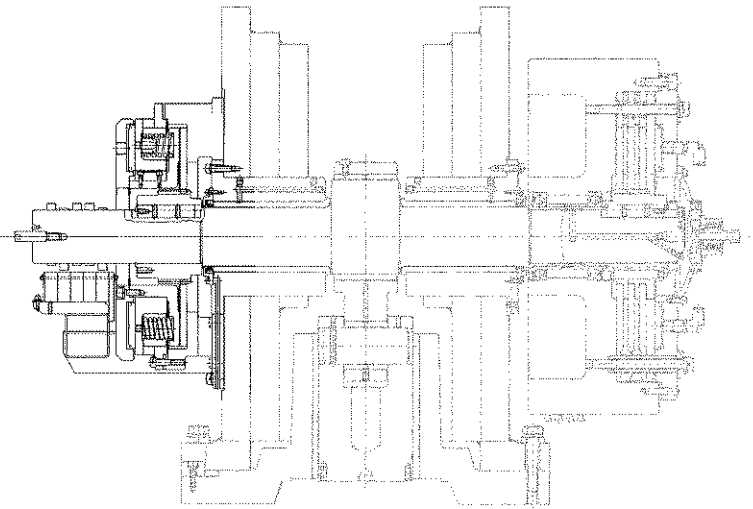
Unit No. 03  
Drive

From serial No. C67325 (506072), C57585 (505072),  
C55167 (505050) and after.

Index No.	Code No.	Parts Name	Drawing No. or Type	Q'ty			Note
				506072	505072	505050	
42	74159239	Ram pin	821058	1	1	1	
43		Connecting rod	801014b	1	1	1	
45	74159242	Ram pin bushing	480164c	1	1	1	
47	74159262	Ram guide bushing	821057	1	1	1	
48		Set screw (cup end)	M8 x 10	2	2	2	
49		Lock bolt	490233	1	1	1	
50	74159244	Connecting bushing	801012a	1	1	1	
52		Plug	PT 1/8	2	2	2	
56	74159123	Front crank shaft support	801030h	1	1	1	
57		Cap screw (with wiring hole)	M10 x 35	6	6	6	
58		Brake bracket	801007f	1	1	1	
59		Cap screw (with wiring hole)	M12 x 40	8	8	8	
118		Plug	PT 1/8	1	1	1	
119		Ram	821106a	1	1	1	
120		Ram guide	821107d	1	1	1	
121		Washer	821009b	4	4	4	
122		High tension bolt	M20 x 100	4	4	4	
123		Spring washer	M20	4	4	4	
124		Key	821010a	2	2	2	
125		Cap screw	M10 x 30	2	2	2	

Unit No. 03  
Drive

From serial No. C67325 (506072), C57585 (505072),  
C55167 (505050) and after.



Unit No. 03  
Drive

From serial No. C67325 (506072), C57585 (505072),  
C55167 (505050) and after.

Index No.	Code No.	Parts Name	Drawing No. or Type	Q'ty			Note
				506072	505072	505050	
69	<del>74159117</del> 74159117	Friction plate	801016 ✓	1	1	1	
70	74159713	Cap screw	M6 x 16	8	8	8	
71	74159522	Snap ring	STW-90	1	1	1	
72	74159217	Brake spline	801031	1	1	1	
74	74159121	Crank key	801023b	1	1	1	
76	74159324	Spacer	801036a	8	8	8	
77		Spring housing	801008c	1	1	1	
78	74159105	Clutch piston	801015	1	1	1	
79	74159323	Spring guide	801035	8	8	8	
80	74159319	Brake spring	801034c	8	8	8	
81	74159429	Pressure disk	801009c	1	1	1	
82	74159229	Brake cylinder	801033e	1	1	1	
83		Cap screw	M10 x 30	8	8	8	
84		Spring washer	M10	8	8	8	
93	74163734	Proximity switch	BES516-344H0-X	4	4	4	
126	74159630	Slide key	801046a	4	4	4	
127		Cap screw (with wiring hole)	M10 x 50	8	8	8	
128		Proximity switch cam (A)	821085a	1	1	1	
129		Proximity switch cam (B)	821086a	2	2	2	
130		Proximity switch cam (C)	821087a	1	1	1	
131		Lock piece	821155	4	4	4	
132		Set screw (knurl cup end)	M6 x 10	4	4	4	
133		Proximity switch bracket	821113a	1	1	1	
134		Set plate	821114a	1	1	1	
135		Cap screw	M6 x 10	2	2	2	
136		Spring washer	M6	2	2	2	
137	74159714	Washer	M6	2	2	2	
138		Screw rod	M4 x 135 <sup>ø</sup>	2	2	2	

